

---

# POWER PLANT MOUNT

## CONTENTS

E32AA--

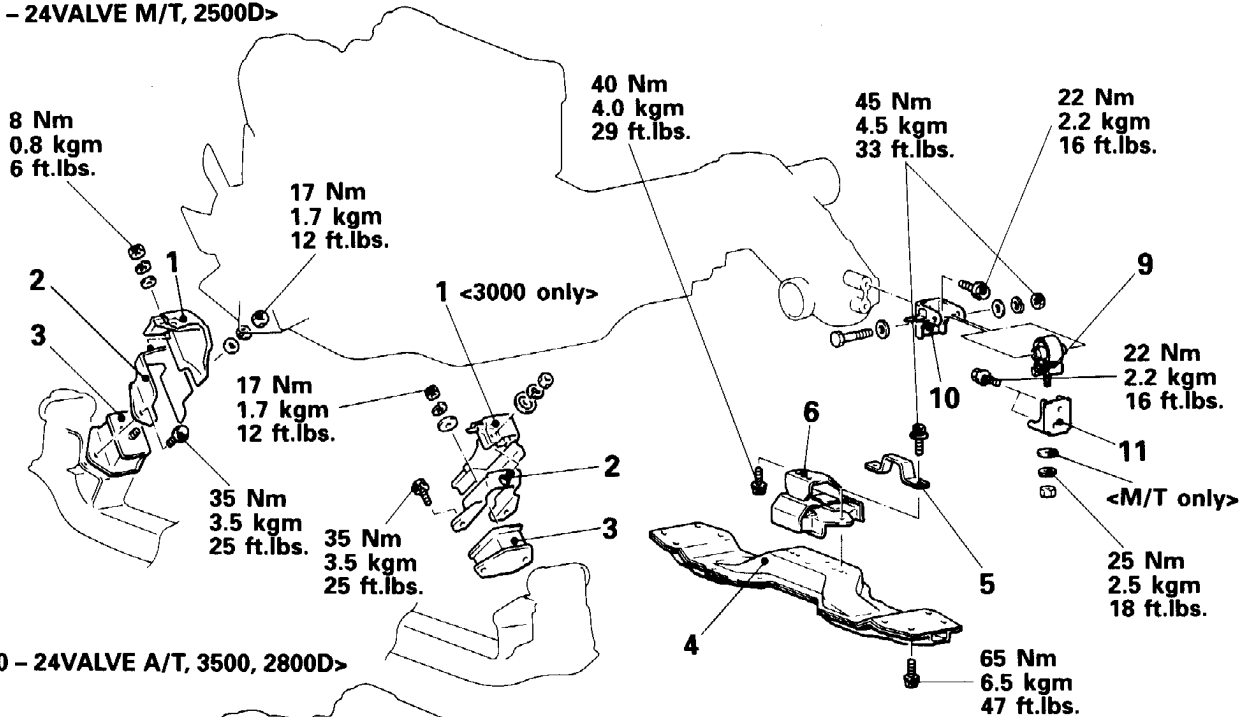
ENGINE MOUNTING .....	2
FRONT DIFFERENTIAL MOUNTING .....	4

# ENGINE MOUNTING

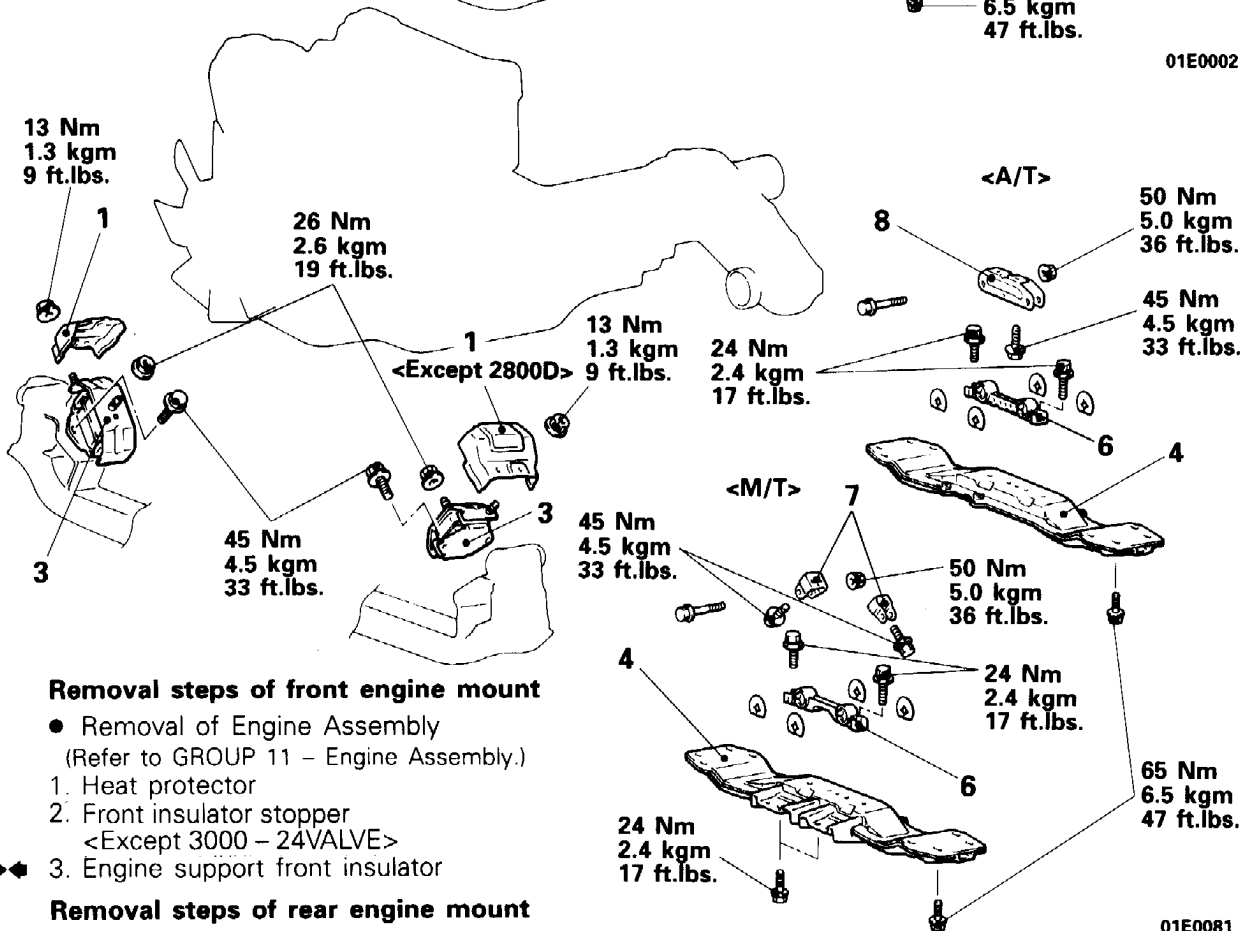
## REMOVAL AND INSTALLATION

E32JA..

<2400, 3000 – 12VALVE,  
3000 – 24VALVE M/T, 2500D>



<3000 – 24VALVE A/T, 3500, 2800D>



01E0002

### Removal steps of front engine mount

● Removal of Engine Assembly  
(Refer to GROUP 11 – Engine Assembly.)

1. Heat protector
2. Front insulator stopper  
<Except 3000 – 24VALVE>

◆◆ 3. Engine support front insulator

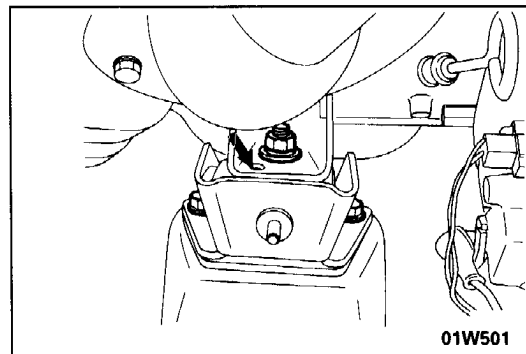
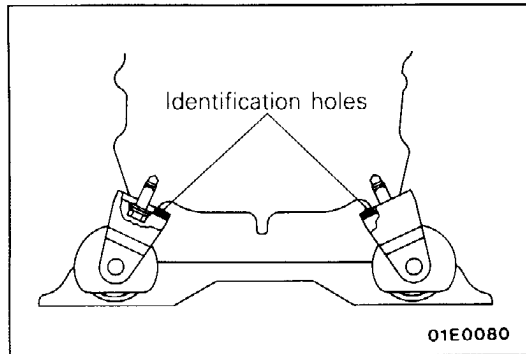
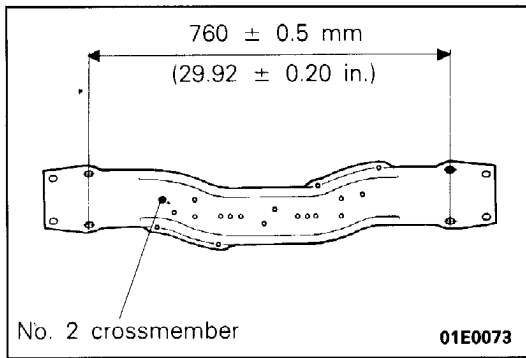
### Removal steps of rear engine mount

4. No. 2 crossmember
5. Stopper
6. Engine support rear insulator
- ◆◆ 7. Rear engine mount bracket <M/T>
8. Rear engine mount bracket <A/T>

### Removal steps of transfer role stopper

9. Transfer support insulator
10. Transfer mounting bracket
11. Transfer support bracket

01E0081



## INSPECTION

E32TCBC

- Check insulators for cracks, separation or deformation.
- Check the front insulator stoppers for deformations.
- Check insulators for cracks, separation or deformation.
- Check transfer mounting bracket for deformation or corrosion.
- Check transfer support bracket for deformation or corrosion.
- Check No. 2 crossmember for deformation or corrosion.
- Check No. 2 crossmember as illustrated for dimension.

## SERVICE POINTS OF INSTALLATION

### 7. INSTALLATION OF ENGINE REAR MOUNT BRACKET

Install the engine mount bracket so that the identification holes are facing towards the inside of the vehicle.

### 3. INSTALLATION OF ENGINE SUPPORT FRONT INSULATOR

make sure that the locating boss and hole are in alignment.

#### Caution

**Do not distort rubber portions, and never stain rubber portions with fuel or oil.**

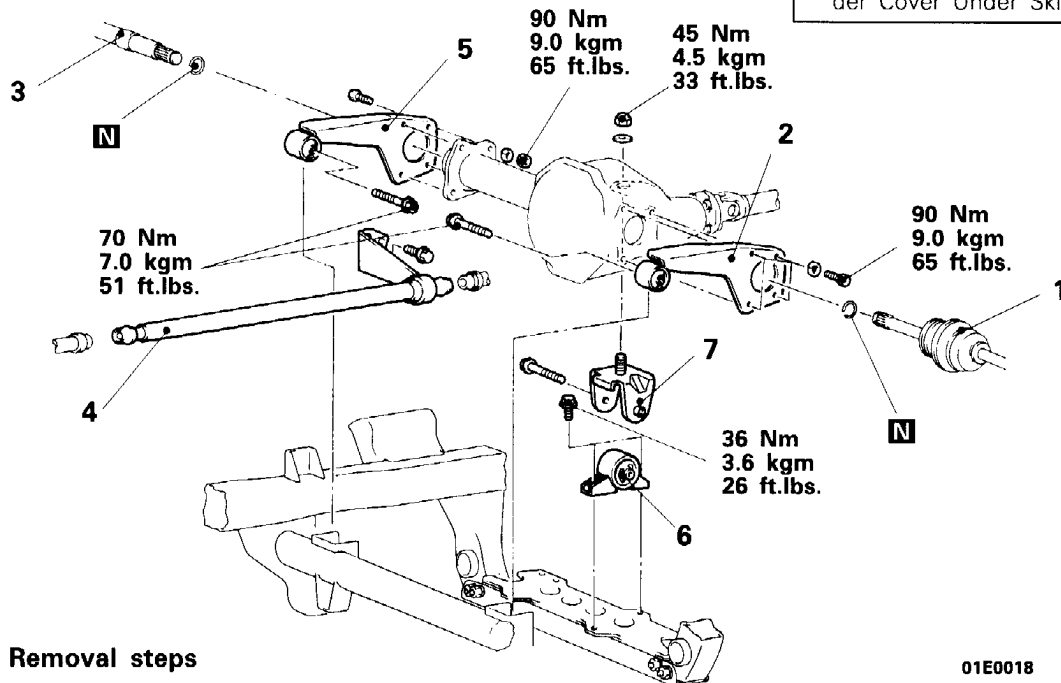
## FRONT DIFFERENTIAL MOUNTING

E32LA--

## REMOVAL AND INSTALLATION

## Pre-removal and Post-installation Operation

- Removal and Installation of the Air Guide Plate <3000, 3500>
- Removal and Installation of the Under Cover Under Skid Plate.



## Removal steps

1. Knuckle and drive shaft assembly (Refer to GROUP 26 – Knuckle, Drive Shaft.)
2. Differential mounting bracket (L.H.)
3. Inner shaft (Refer to GROUP 26 – Inner Shaft.)
4. Winch drive shaft (front) <Vehicles with mechanical winch>
5. Differential mounting bracket (R.H.)
6. Differential mounting bracket
7. Differential support bracket

01E0018

## SERVICE POINTS OF REMOVAL

E32LBAC

## 2. REMOVAL OF DIFFERENTIAL MOUNTING BRACKET (L.H.)/5. DIFFERENTIAL MOUNTING BRACKET (R.H.)/6. DIFFERENTIAL MOUNTING BRACKET

While supporting the differential carrier with a jack, remove the differential mounting bracket.

## NOTE

Support the differential carrier with a jack until installing the differential mounting bracket.

## INSPECTION

E32LCAC

- Check the differential mounting brackets for deformation and damage.
- Check the differential support bracket for deformation and damage.
- Check insulators for cracks, separation or deformation.