

INTERIOR

CONTENTS

E52ZA00AA

INTERIOR	52A
SUPPLEMENTAL RESTRAINT SYSTEM (SRS)	52B

52-2

NOTES

INTERIOR

CONTENTS

E52AA--

SPECIFICATIONS	2	HEADLINING	16
General Specifications	2	FRONT SEAT	18
Service Specifications	2	REAR SEAT	21
SPECIAL TOOLS	2	FRONT SEAT BELT	24
INSTRUMENT PANEL*	3	REAR SEAT BELT	26
FLOOR CONSOLE*	8		
TRIMS	10		

SUPPLEMENTAL RESTRAINT SYSTEM (SRS) - AIR BAG

- (1) An SRS air bag for the driver's side seat is optional equipment in this vehicle.
- (2) The SRS includes the following components: impact sensors, SRS diagnosis unit, SRS warning lamp, air bag module, clock spring, interconnecting wiring. Other SRS-related components (that may have to be removed/installed in connection with SRS service or maintenance) are indicated in the table of contents by an asterisk (*).

WARNING!

- (1) Improper service or maintenance of any component of the SRS, or any SRS-related component, can lead to personal injury or death to service personnel (from inadvertent firing of the air bag) or to the driver (from rendering the SRS inoperative).
- (2) Service or maintenance of any SRS component or SRS-related component must be performed only at an authorized MITSUBISHI dealer.
- (3) MITSUBISHI dealer personnel must thoroughly review this manual, and especially its GROUP 52B - Supplemental Restraint System (SRS), before beginning any service or maintenance of any component of the SRS or any SRS-related component.

SPECIFICATIONS

GENERAL SPECIFICATIONS

E52CA--

Items	Specifications
Suspension seat	
Suspension mechanism	Coil spring type with shock absorber
Up-and-down movement stroke	mm (in.) 50 (2.0)
Body weight adjustment	kg (lbs.) 60–100 (132–220)
Seat height adjustment	3 steps
Heated seats	
Power consumption	W/(passenger compartment temperature at 20°C (68°F))
HIGH	48.4
LOW	12.1
Thermostat working temperature	°C (°F)
ON → OFF	35–45 (95–113)
OFF → ON	25–35 (77–95)



SERVICE SPECIFICATIONS

E52CB--

Items	Specifications
Standard value	
Heated seats	
Seatback heater resistance (between terminals)	Ω /(passenger compartment temperature at 20°C (68°F)) Approx. 5.8
Seat cushion heater resistance (between terminals)	Ω /(passenger compartment temperature at 20°C (68°F))
Between terminals 1 and 3	Approx. 7.1
Between terminals 2 and 3	Approx. 7.4
Between terminals 1 and 2	Approx. 0.4

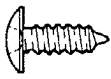



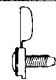
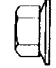
SPECIAL TOOLS

E52DA--

Tool	Number	Name	Use
	MB990784	Ornament remover	Removal of switch trim, etc.
	MB990826	Torque wrench	Removal and installation of special screw

INSTRUMENT PANEL

For installation of the instrument panel, the bolts and screws described below are used. They are indicated by symbols in the illustration.

Name	Symbol	Size mm (in.) (D × L)	Colour	Shape
Tapping screw	A	5 × 12 (0.20 × 0.47)	–	
	B	5 × 16 (0.20 × 0.62)	–	
	C	5 × 16 (0.20 × 0.62)	Black	
	D	5 × 20 (0.20 × 0.79)	Black	
	E	5 × 20 (0.20 × 0.79)	Black	
	F	4 × 10 (0.16 × 0.39)	Black	
	G	5 × 12 (0.20 × 0.47)	–	
	H	5 × 16 (0.20 × 0.62)	–	
	I	5 × 20 (0.20 × 0.79)	–	
	J	5 × 25 (0.20 × 0.98)	–	
Washer assembled screw	K	5 × 12 (0.20 × 0.47)	–	
	L	5 × 20 (0.20 × 0.79)	Black	
Washer assembled bolt	M	8 × 20 (0.31 × 0.79)	–	
Machine screw	N	4 × 8 (0.16 × 0.31)	–	
	O	4 × 12 (0.16 × 0.47)	Black	
Cap installed screw	P	5 × 16 (0.20 × 0.62)	–	
Nut	Q	6 (0.24)	–	

19N0001

D = Thread diameter
L = Effective thread length

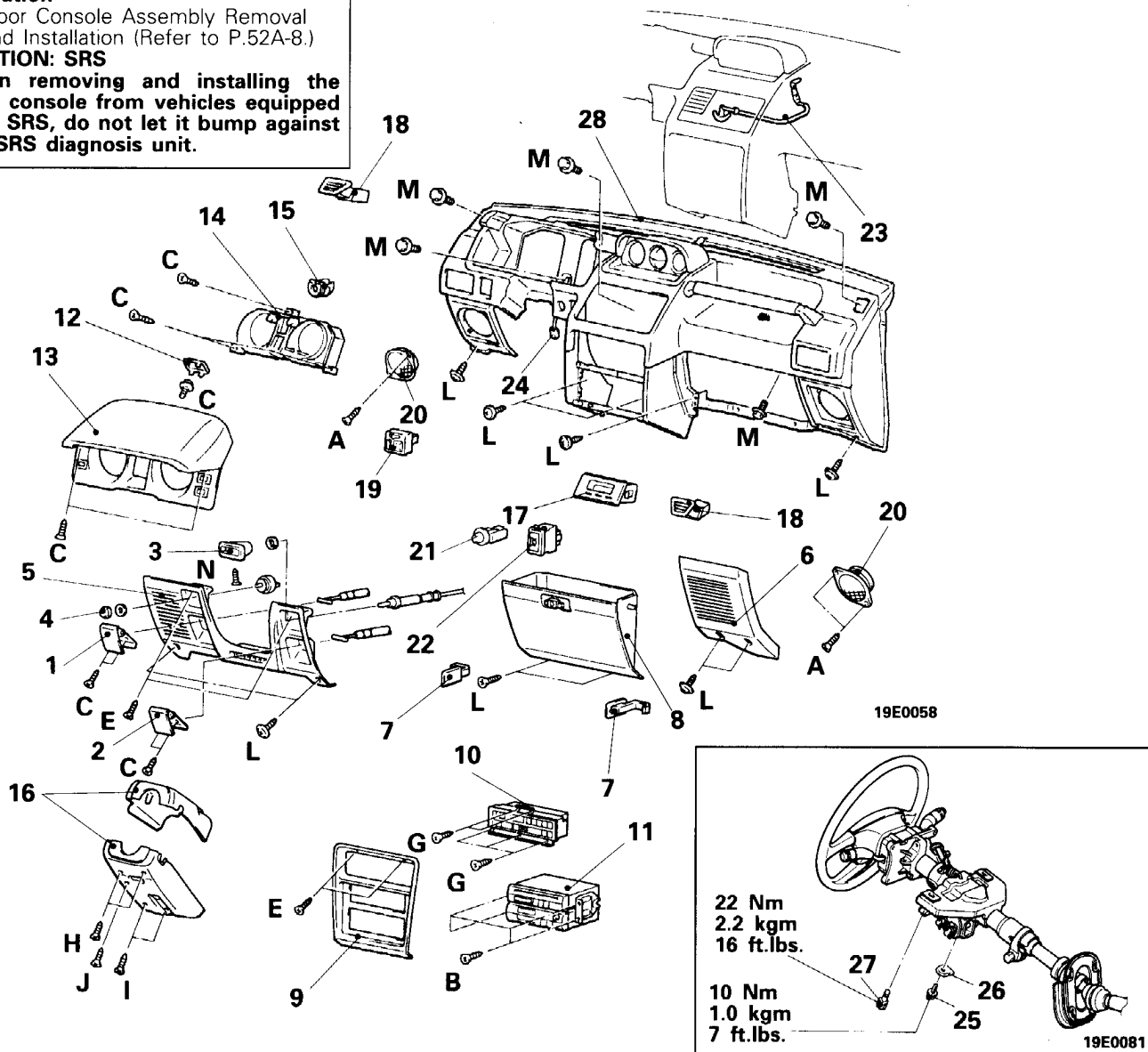
REMOVAL AND INSTALLATION

Pre-removal and Post-installation Operation

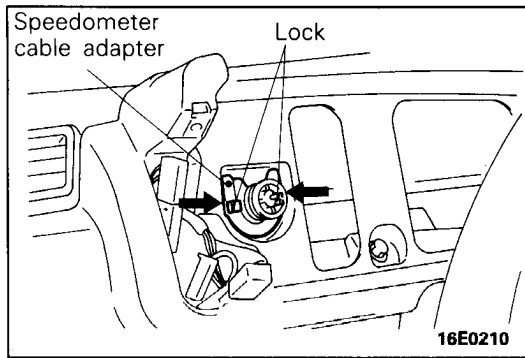
- Floor Console Assembly Removal and Installation (Refer to P.52A-8.)

CAUTION: SRS

When removing and installing the floor console from vehicles equipped with SRS, do not let it bump against the SRS diagnosis unit.

**Removal steps**

- | | |
|---|--|
| <ol style="list-style-type: none"> 1. Hood lock release handle 2. Fuel filler door lock release handle 3. Idle control knob 4. Headlamp leveling switch 5. Instrument under cover 6. Instrument corner cover 7. Glove box stopper 8. Glove box assembly 9. Centre panel A 10. Heater control assembly 11. Radio or audio 12. Meter hood plug 13. Meter bezel assembly 14. Combination meter | <p>◆◆ 15. Speedometer cable adapter
<Vehicles built up to October, 1993></p> <p>16. Column cover</p> <p>17. Clock</p> <p>18. Side defroster garnish</p> <p>19. Door mirror control switch</p> <p>20. Front speaker</p> <p>21. Rheostat</p> <p>◆◆ 22. Rear wiper and washer switch</p> <p>◆◆◆ 23. Ventilation control wire</p> <p>◆◆◆ 24. Harness connector</p> <p>◆◆◆ 25. Special screw</p> <p>◆◆◆ 26. Special washer</p> <p>◆◆◆ 27. Steering column installation bolts</p> <p>◆◆◆ 28. Instrument panel assembly</p> |
|---|--|



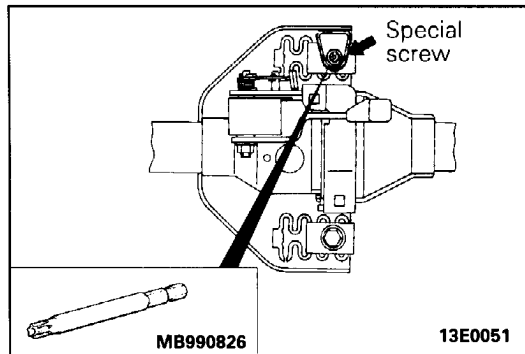
SERVICE POINTS OF REMOVAL

E52GCAY

15. REMOVAL OF SPEEDOMETER CABLE ADAPTER

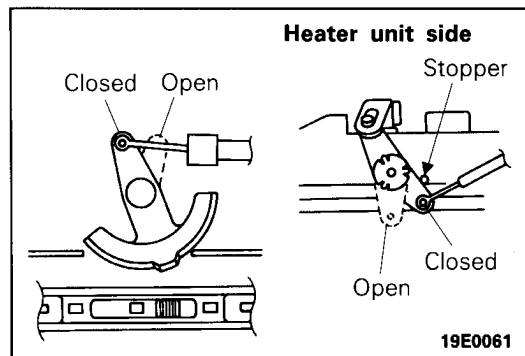
<Vehicles built up to October, 1993>

- (1) Disconnect the speedometer cable at the transmission end of the cable.
- (2) Remove the lock of the speedometer cable adapter from the instrument panel.
- (3) Pull the speedometer cable slightly toward the vehicle interior, and then remove the speedometer cable adapter.



25. REMOVAL OF SPECIAL SCREW

Steering column assembly is installed with a special screw. Remove it by using the special tool.



SERVICE POINTS OF INSTALLATION

E52GEAI

23. INSTALLATION OF VENTILATION CONTROL WIRE

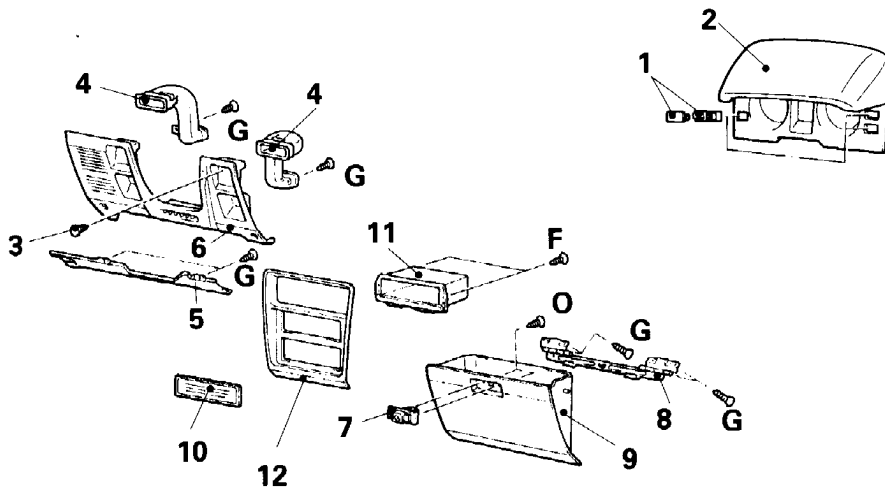
- (1) Set the cool air bypass dial to the closed position.
- (2) Close the cool air bypass lever at the heater unit side (lever is lightly hit against the stopper).
- (3) Install the ventilation control wire and fix it securely with the clip.

25. INSTALLATION OF SPECIAL SCREW

Tighten the special screw using the special tool.

DISASSEMBLY AND REASSEMBLY

E52GF--



19E0059

Meter bezel assembly disassembly steps

1. Switch or plug
2. Meter bezel

Instrument under cover disassembly steps

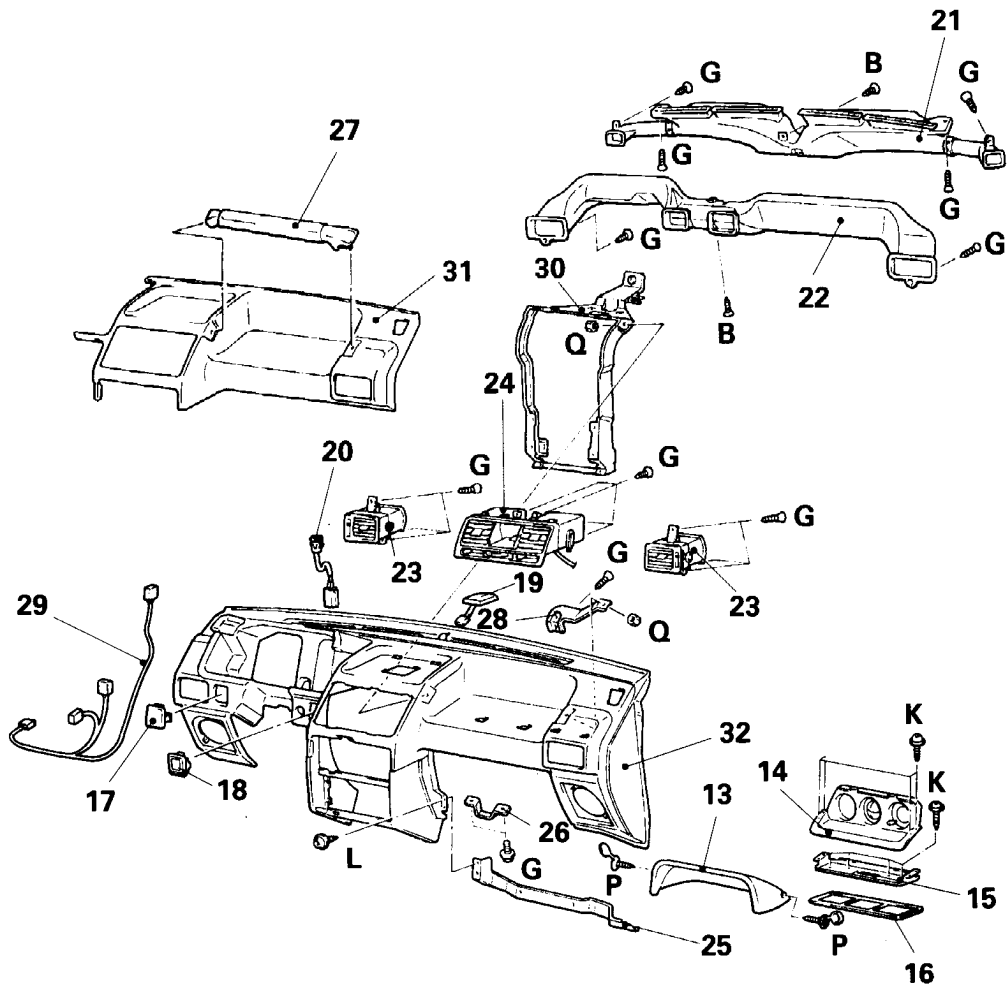
3. Plug
4. Lap heater duct
5. Instrument under cover frame
6. Instrument under cover

Glove box assembly disassembly steps

7. Glove box lock
8. Glove box hinge
9. Glove box

Centre panel A disassembly steps

10. Radio plug
11. Box
12. Centre panel A



19E0059

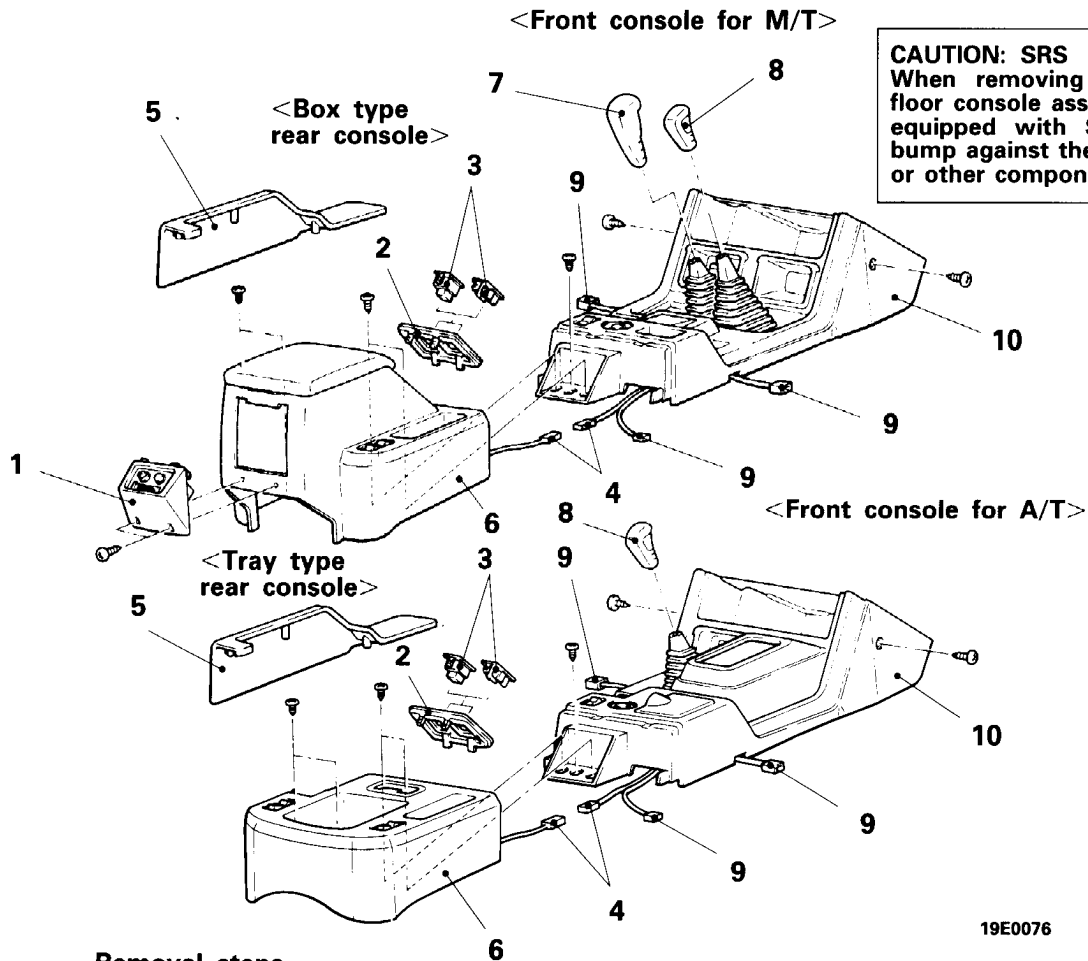
Instrument panel assembly disassembly steps

- 13. Meter hood
- 14. Multi meter
- 15. Meter bracket
- 16. Instrument panel mat <Vehicles without multi meter>
- 17. Plug
- 18. Hole cover
- 19. Geomagnetic sensor
- 20. Photo sensor
- 21. Side defroster duct and defroster nozzle assembly
- 22. Distribution duct
- 23. Side air outlet
- 24. Centre air outlet
- 25. Glove box frame
- 26. Glove box striker
- 27. Assist grip
- 28. Assist grip bracket
- 29. Instrument panel wiring harness
- 30. Instrument panel reinforcement
- 31. Instrument panel pad
- 32. Instrument panel

FLOOR CONSOLE

REMOVAL AND INSTALLATION

E52HA--



CAUTION: SRS
When removing and installing the floor console assembly from vehicles equipped with SRS, do not let it bump against the SRS diagnosis unit or other components.

Removal steps

1. Rear heater control assembly
2. Switch panel
3. Suspension control switch or hole cover
4. Rear console harness connector
5. Side panel A
6. Rear console assembly
7. M/T shift lever knob
8. Transfer shift lever knob
9. Floor console harness connector
10. Front console assembly

19E0076

SERVICE POINT OF REMOVAL

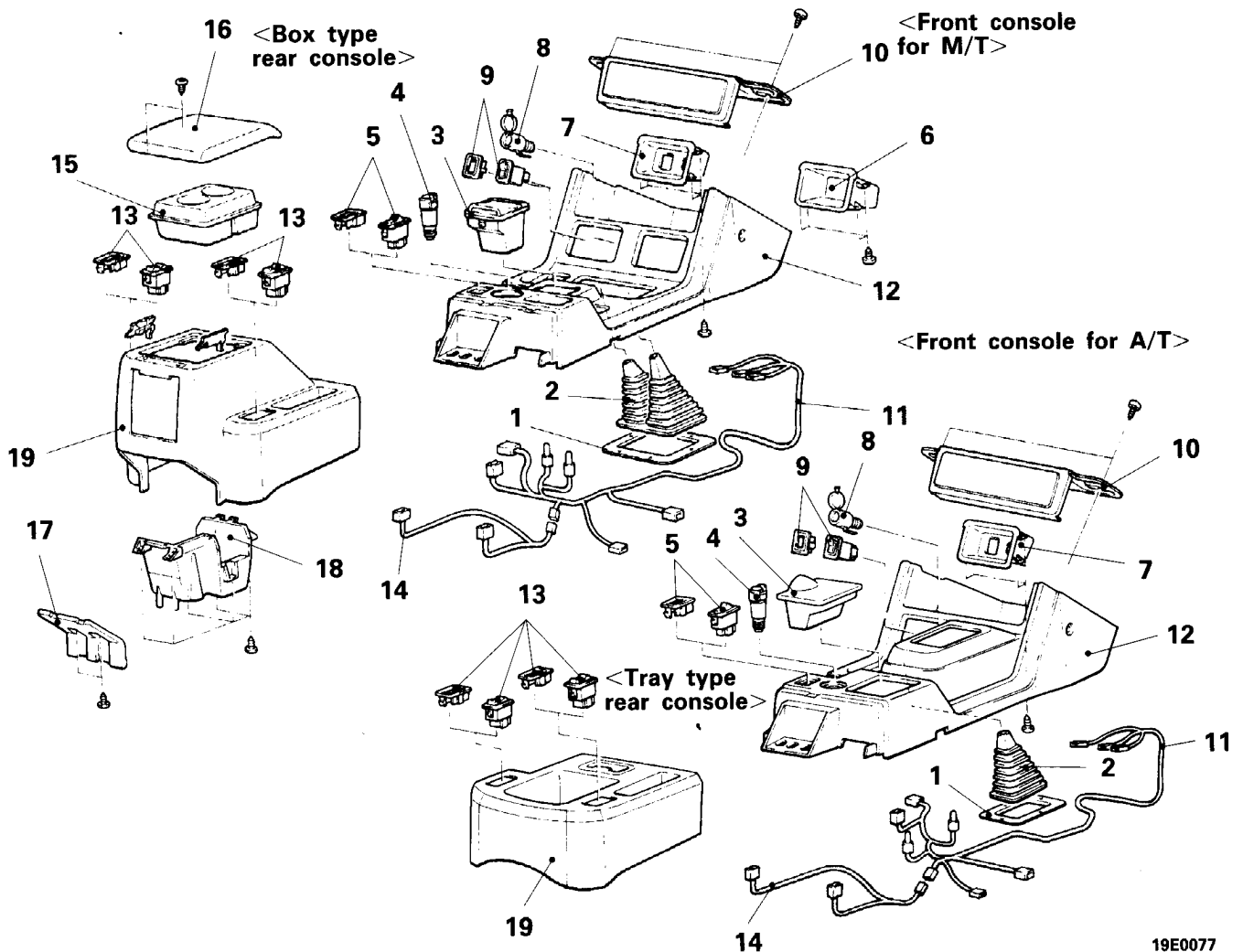
E52HBAI

10. REMOVAL OF FRONT CONSOLE ASSEMBLY

When removing the A/T front console assembly, set the A/T selector lever to "L".

DISASSEMBLY AND REASSEMBLY

E52HE--



19E0077

Front console assembly disassembly steps

1. Boot reinforcement
2. Boot
3. Ashtray
4. Cigarette lighter
5. Rear heater fan switch or hole cover
6. Box
7. Plate
8. Accessory socket
9. Rear differential lock switch or hole cover
10. Accessory box cover
11. Floor console wiring harness
12. Front console

Rear console assembly disassembly steps

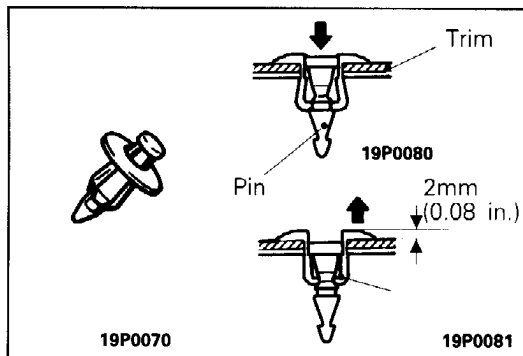
13. Heated seat switch or hole cover
14. Rear console wiring harness
15. Cup holder
16. Lid assembly
17. Rear console cover
18. Box
19. Rear console

TRIMS

TRIM CLIP REMOVAL/INSTALLATION PROCEDURES

E52GIAA

The type of clip shown in the illustration, which is used for the installation of trim, should be removed and installed by the following procedures described below.

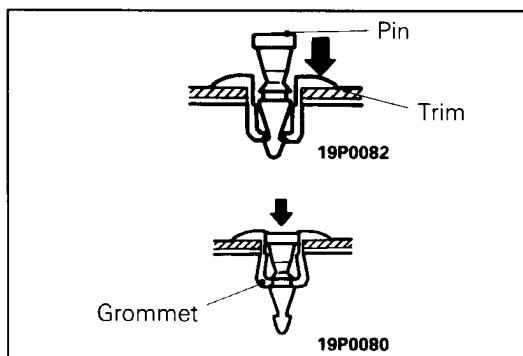


REMOVAL

- (1) Use a cross-tip (+) screwdriver to push inward the pin (at the centre of the trim clip) to a depth of about 2 mm (0.08 in.).
- (2) Pull the trim clip outward to remove it.

Caution

Do not push the pin inward more than necessary because it may damage the grommet, or the pin may fall in, if pushed too far.

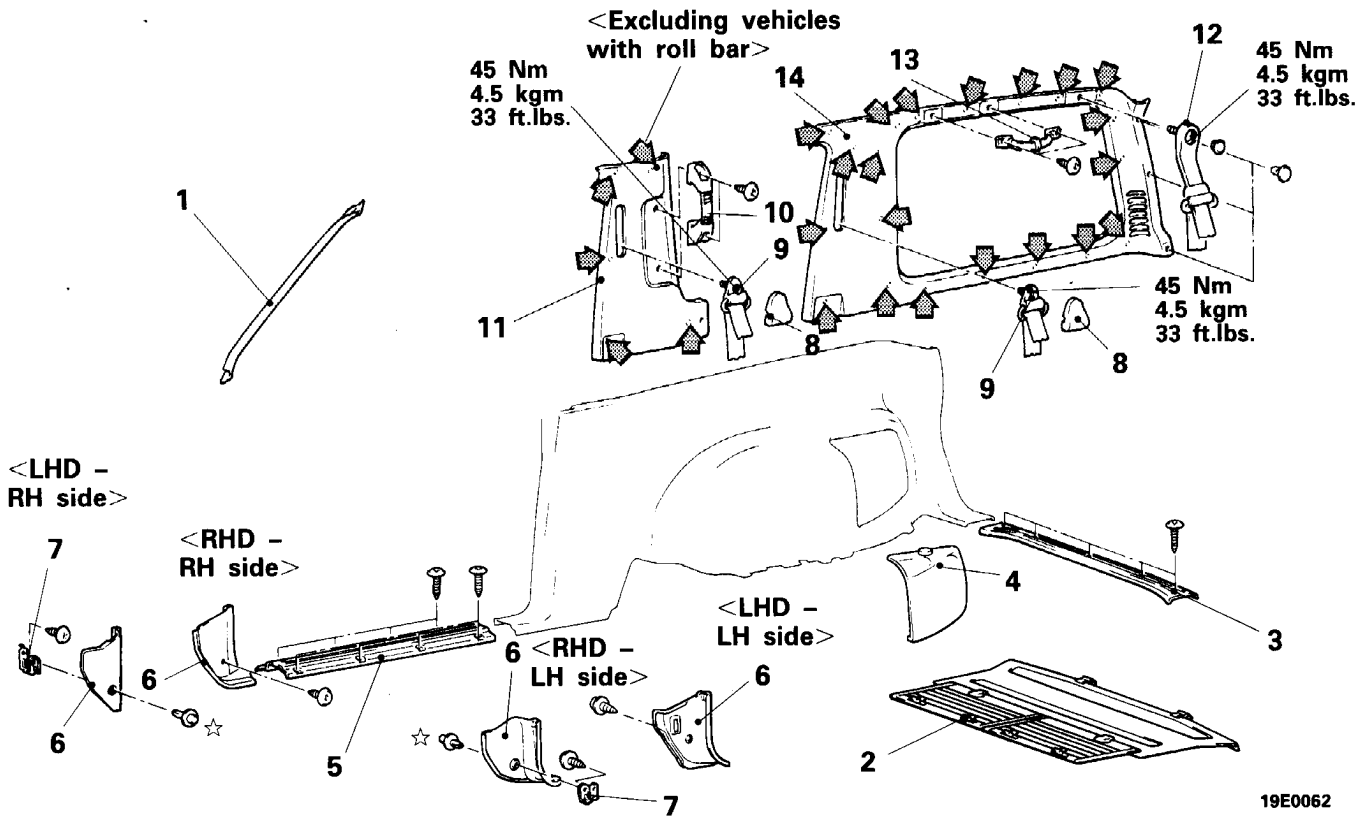


INSTALLATION

- (1) With the pin pulled out, insert the trim clip into the hole in the trim.
- (2) Push the pin inward until the pin's head is flush with the grommet.
- (3) Check whether the trim is secure.

<Canvas Top and Metal Top>
REMOVAL AND INSTALLATION

E52JA-A



1. Front pillar edge trim <vehicles with partial trim>
 2. Centre shelf assembly
 3. Rear trimming plate
 4. Jack lid
- Cowl side trim removal steps**
5. Front scuff plate
 6. Cowl side trim
 7. Cowl side bracket <RH side only for LHD, LH side only for RHD>

**Centre pillar trim removal steps
<Canvas Top>**

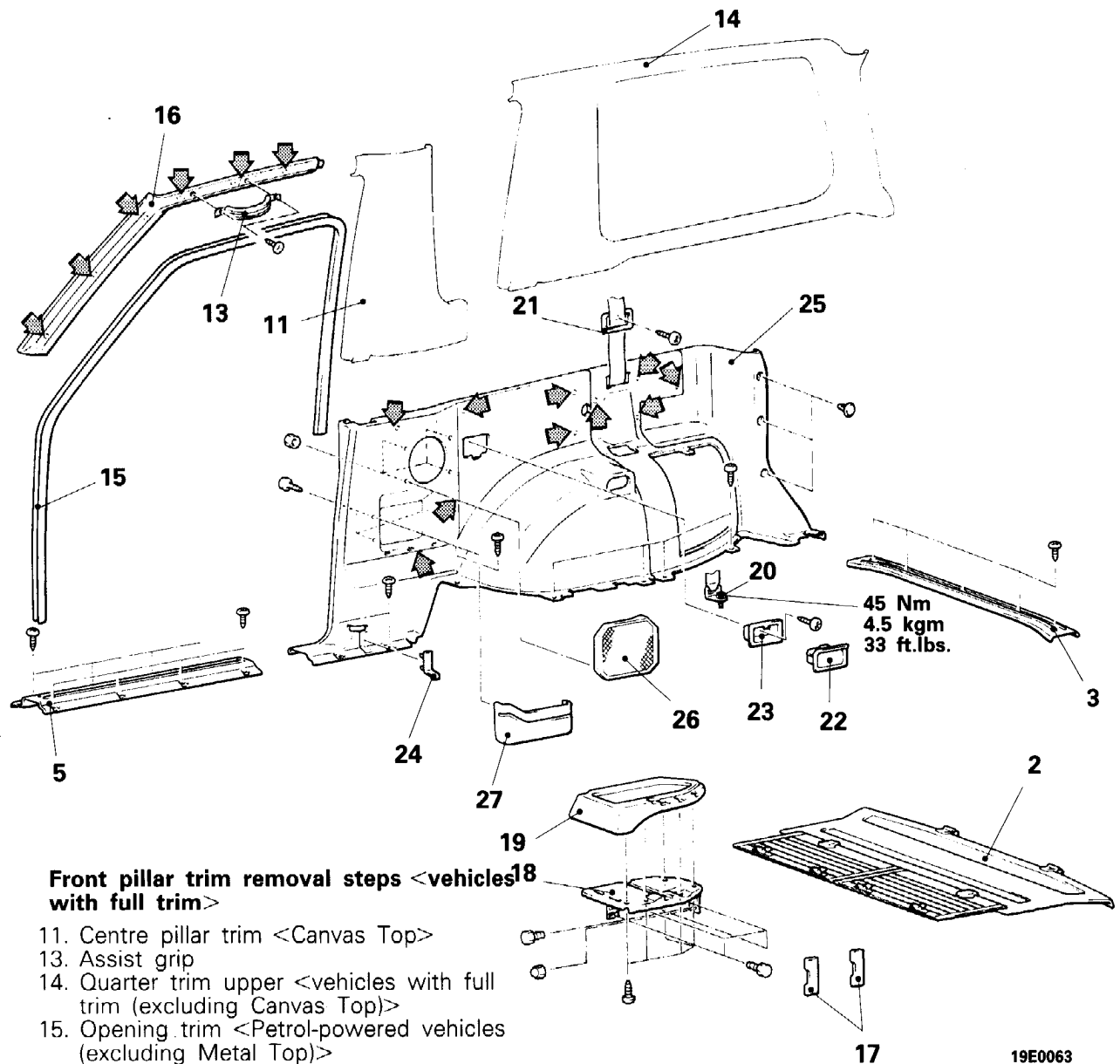
8. Sash guide cover
9. Front seat belt sash guide
- Roll bar
(Refer to GROUP 42 – Roll Bar.)
10. Assist grip
11. Centre pillar trim

**Quarter trim upper removal steps
<Vehicles with full trim (excluding Canvas Top)>**

8. Sash guide cover <Front only>
9. Front seat belt sash guide
12. Rear seat belt sash guide
13. Assist grip
14. Quarter trim upper

NOTE

- (1) ◀: Clip position
- (2) ☆: Refer to trim clip removal/installation procedures (P.52A-10).



Front pillar trim removal steps <vehicles with full trim>

- 11. Centre pillar trim <Canvas Top>
- 13. Assist grip
- 14. Quarter trim upper <vehicles with full trim (excluding Canvas Top)>
- 15. Opening trim <Petrol-powered vehicles (excluding Metal Top)>
- 16. Front pillar trim

Side shelf removal steps

- 2. Centre shelf assembly
- 17. Shelf bracket cap
- 18. Side shelf bracket
- 19. Side shelf

Quarter trim lower removal steps

- 3. Rear trimming plate
- 5. Front scuff plate
- 14. Quarter trim upper <vehicles with full trim (excluding Canvas Top)>
- 19. Side shelf
 - Roll bar (Refer to GROUP 42–Roll Bar)
 - Link dumper
 - Roof cover frame assembly (Refer to GROUP 42–Canvas Top)
- 20. Rear seat belt anchor plate
- 21. Rear seat belt garnish

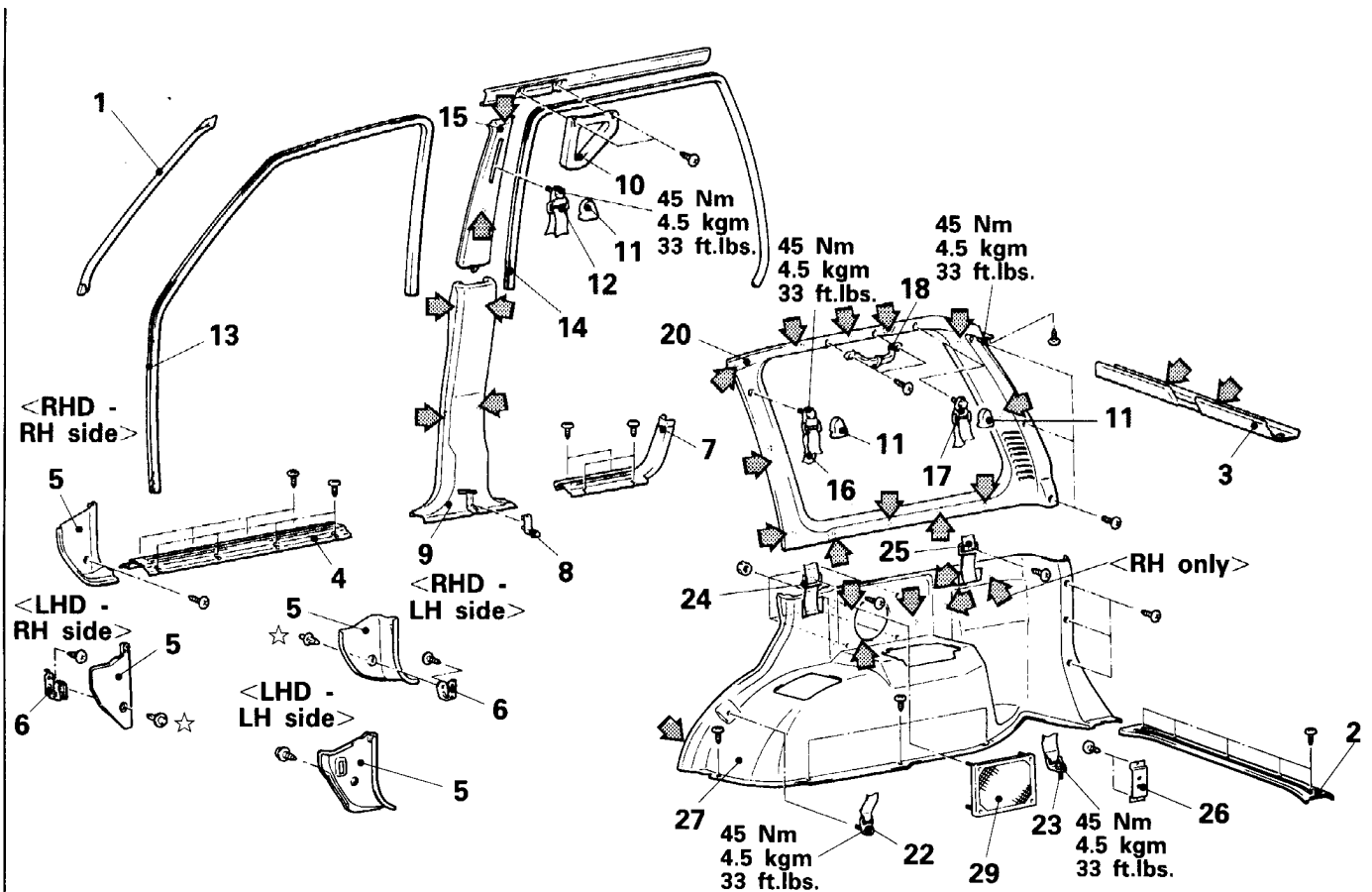
- Rear seat side back assembly <excluding Canvas Top> (Refer to P.52A-21.)
- 22. Rear ashtray case
- 23. Rear ashtray cover
- 24. Belt anchor cover
- 25. Quarter trim lower
- 26. Speaker garnish
- 27. Quarter pocket

NOTE
 : Clip position

<Long Body>

REMOVAL AND INSTALLATION

E52JA-B



19E0064

1. Front pillar edge trim <vehicles with partial trim>
2. Rear trimming plate
3. Rear roof rail trim

Cowl side trim removal steps

4. Front scuff plate
5. Cowl side trim
6. Cowl side bracket <RH side only for LHD, LH side only for RHD>

Centre pillar trim removal steps

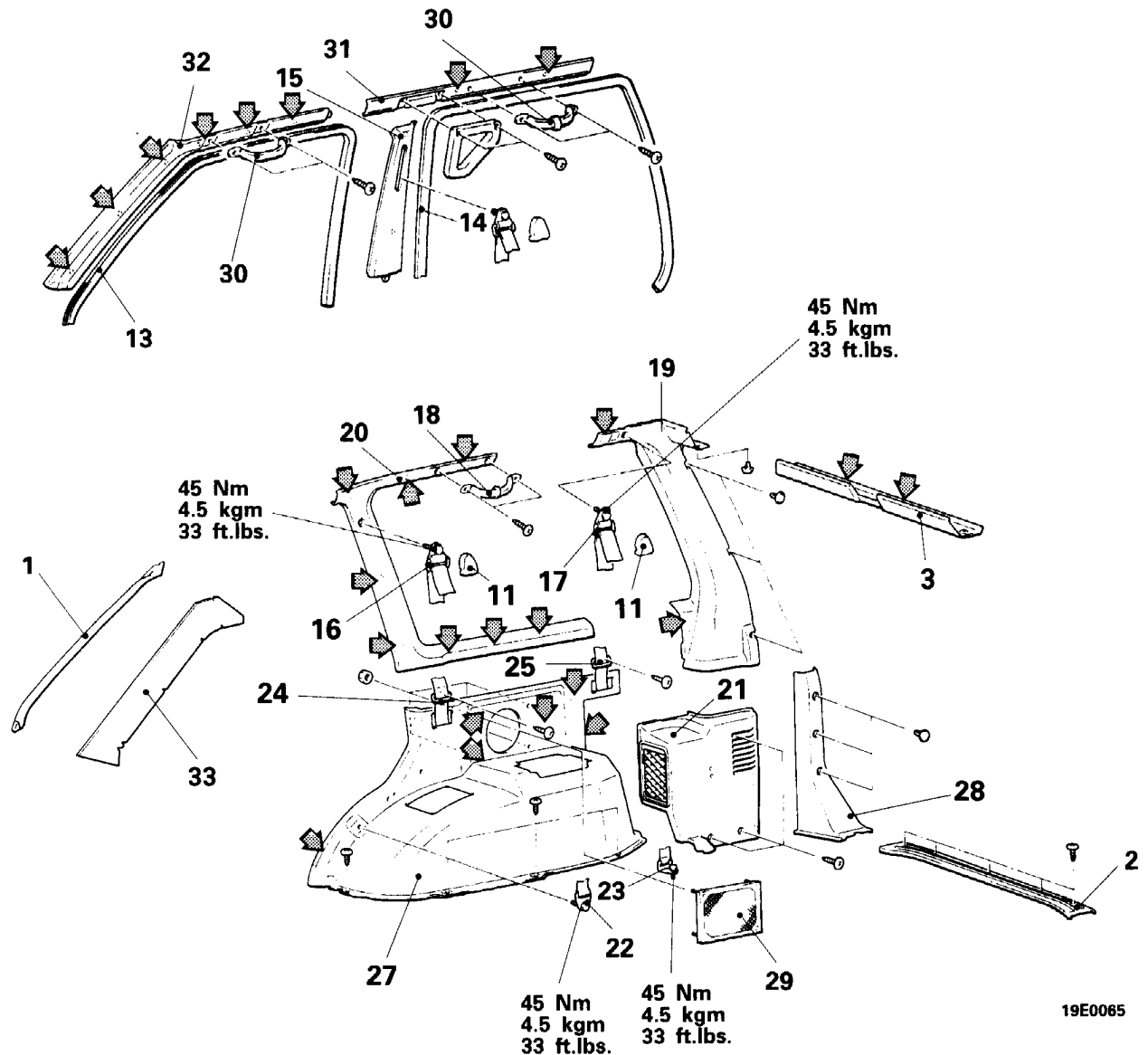
4. Front scuff plate
7. Rear scuff plate
8. Belt anchor cover
9. Centre pillar trim, lower
10. Grip
11. Sash guide cover
12. Front seat belt sash guide
13. Front opening trim } <Excluding petrol-powered vehicles with wide body>
14. Rear opening trim }
15. Centre pillar trim, upper <vehicles with full trim>

Quarter trim removal steps <vehicles without dual A/C and LH side of vehicles with dual A/C>

3. Rear roof rail trim
11. Sash guide cover
16. Second seat belt sash guide
17. Third seat belt sash guide
18. Assist grip
20. Quarter trim, upper
 - Third seat assembly (Refer to P.52A-21.)
2. Rear trimming plate
22. Second seat belt anchor plate
23. Third seat belt anchor plate
24. Second seat belt garnish
25. Third seat belt garnish
26. Cargo lamp bracket <LH side>
27. Quarter trim, lower
29. Speaker garnish

NOTE

- (1) ◀: Clip position
- (2) ☆: Refer to trim clip removal/installation procedures (P.52A-10).



Quarter trim removal steps
 <RH side of vehicles with dual A/C>

3. Rear roof rail trim
11. Sash guide cover
16. Second seat belt sash guide
17. Third seat belt sash guide
18. Assist grip
19. Quarter trim, upper (A/C)
20. Quarter trim, upper
 - Third seat assembly (Refer to P.52A-21.)
2. Rear trimming plate
21. Rear air conditioner unit cover
22. Second seat belt anchor plate
23. Third seat belt anchor plate
24. Second seat belt garnish
25. Third seat belt garnish
27. Quarter trim, lower
28. Quarter trim, lower, rear
29. Speaker garnish

Front pillar trim and side roof rail trim removal steps
 <vehicles with full trim>

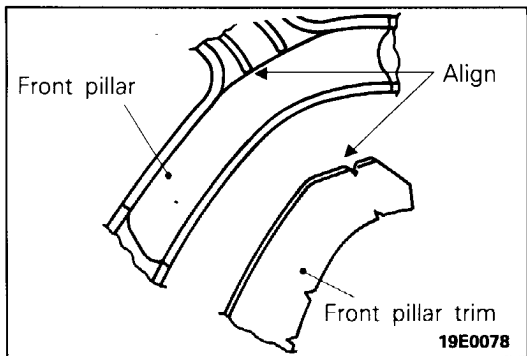
13. Front opening trim } <Petrol-powered
vehicles
excluding wide>
14. Rear opening trim }
15. Centre pillar trim, upper
20. Quarter trim, upper
30. Assist grip
31. Side roof rail trim
32. Front pillar trim

Front pillar trim removal steps
 <Vehicles with partial trim>

1. Front pillar edge trim
13. Front opening trim
- ◆◆ 33. Front pillar trim

NOTE
 ◆: Clip position

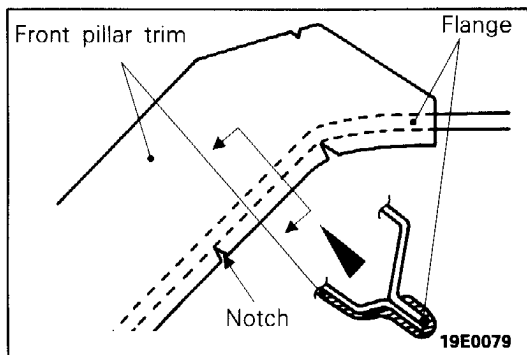
19E0085



SERVICE POINTS OF INSTALLATION

33. INSTALLATION OF FRONT PILLAR TRIM

- (1) Peel off the backing paper.
- (2) Position the front pillar and the top of the trim as shown in the illustration so that the notches are matched.

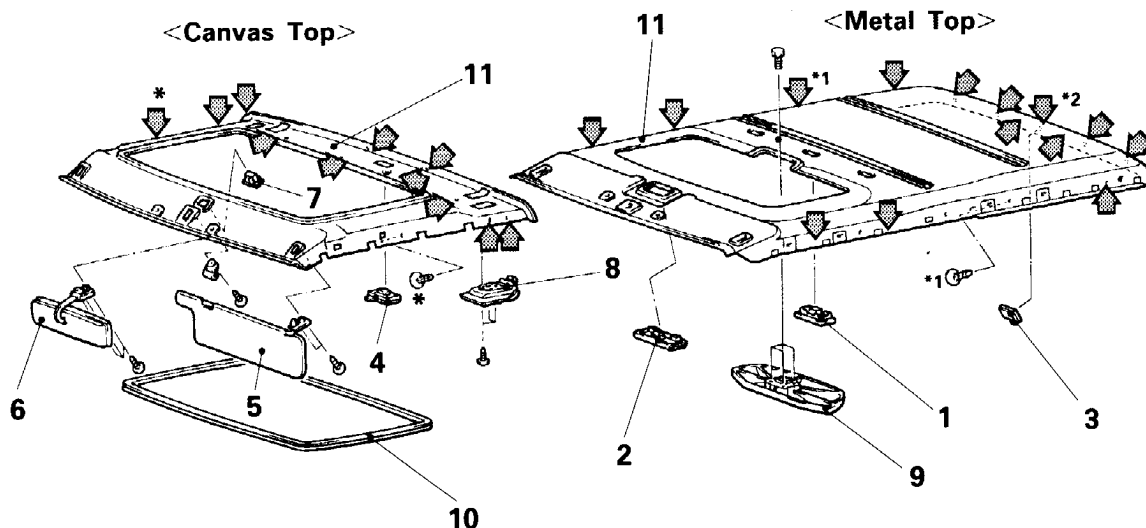


- (3) Match the ends of the notches on the lower side of the trim with the front pillar flange ends.
- (4) Apply the trim securely so that there are no wrinkles.
- (5) Roll the trim onto the flange.

HEADLINING

<Canvas Top and Metal Top>

REMOVAL AND INSTALLATION



19E0013

Removal steps <Canvas Top>

4. Room lamp
5. Sunvisors
6. Inside rear view mirror
7. Canvas roof switch <vehicles with Power Canvas>
8. Folding top lock assembly <vehicles with full trim>
 - Centre pillar trim } (Refer to P.52A-11.)
 - Front pillar trim }
10. Headlining trim <vehicles with Power Canvas>
11. Headlining

NOTE <Canvas Top>

- (1) : Clip position
- (2) * : Install these clips first to determine the position.

Removal steps <Metal Top>

1. Room lamp <vehicles without sunroof>
2. Room lamp, spot lamp <vehicles with sunroof> or map lamp <vehicles without sunroof>
3. Luggage compartment lamp <vehicles with sunroof>
5. Sunvisors
6. Inside rear view mirror
 - Sunroof glass assembly (Refer to GROUP 42 – Sunroof)
9. Sunroof regulator assembly
 - Quarter trim, upper
 - Front pillar trim } (Refer to P.52A-11.)
10. Headlining trim <Vehicles with full trim>
11. Headlining

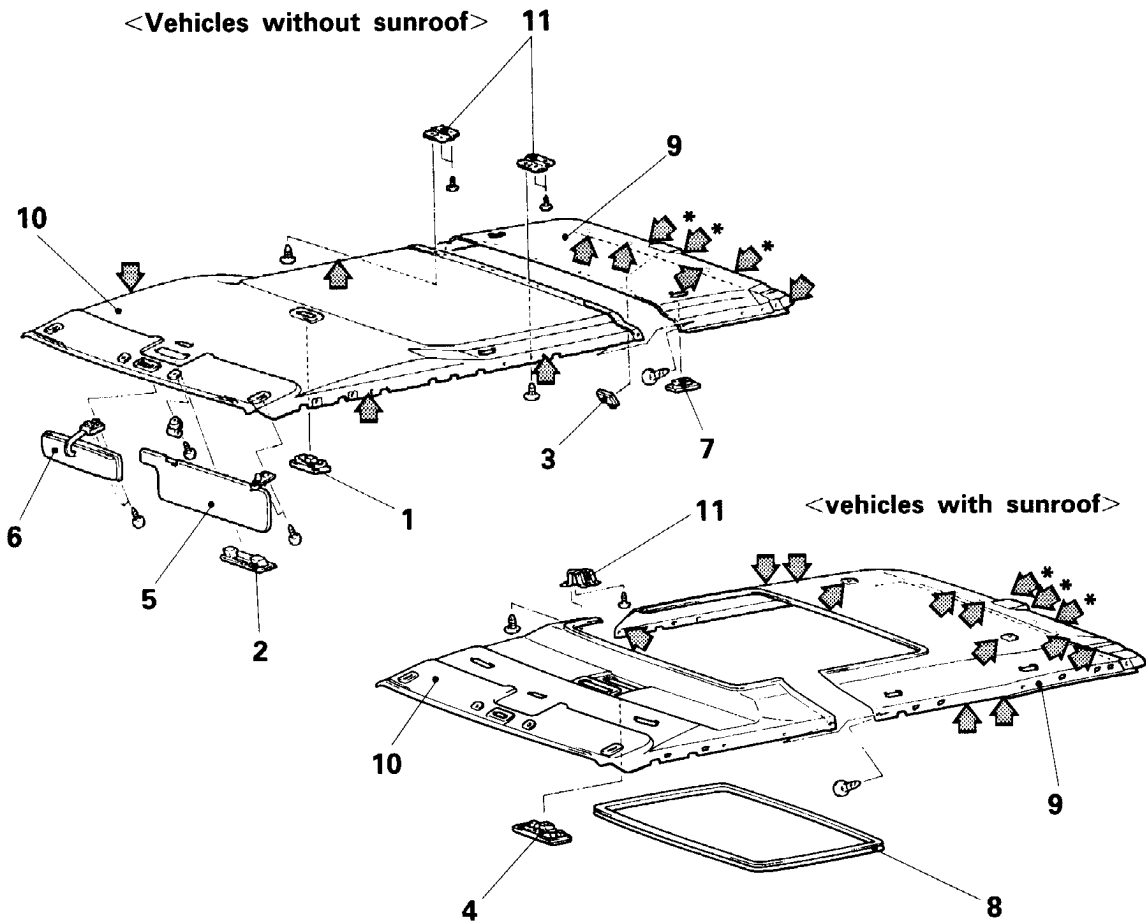
NOTE <Metal Top>

- (1) : Clip position
- (2)*1: Vehicles with full trim only
- (3)*2: Vehicles without sunroof only

<Mid Roof>

E52IA-B

REMOVAL AND INSTALLATION



19E0014

Removal steps <Vehicles without sunroof>

1. Room lamp
 2. Map lamp
 3. Luggage compartment lamp
 5. Sunvisors
 6. Inside rear view mirror
 7. Air outlet assembly
 - <vehicles with dual A/C>
 - Rear roof rail trim
 - Quarter trim, upper
 - Centre pillar trim, upper
 - Side roof rail trim
 - Front pillar trim
 9. Rear headlining
 10. Front headlining
 11. Joint bracket
- } <Vehicles with full trim> (Refer to P.52A-13.)

Removal steps <vehicles with sunroof>

1. Room lamp
2. Map lamp
3. Luggage compartment lamp

4. Sunroof switch
5. Sunvisors
6. Inside rear view mirror
7. Air outlet assembly
- <vehicles with dual A/C>
 - Rear roof rail trim
 - Quarter trim, upper
 - Centre pillar trim, upper
 - Side roof rail trim
 - Front pillar trim
8. Headlining trim
9. Rear headlining
10. Front headlining
11. Joint bracket

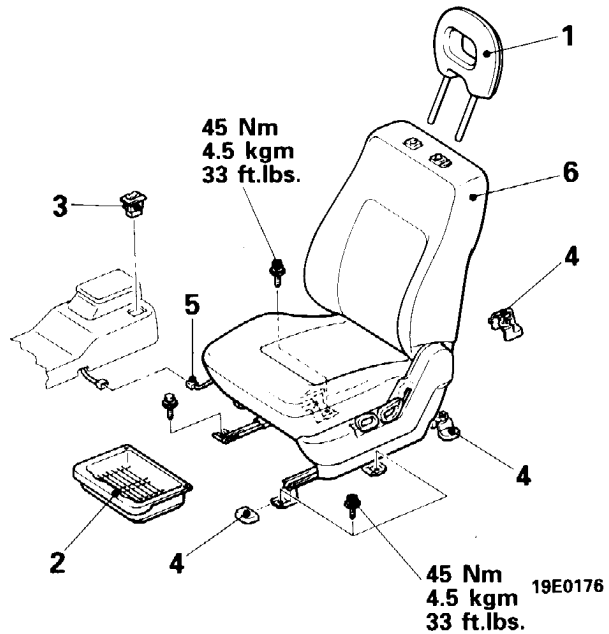
NOTE

- (1) ◀: Clip position
 (2) *: Vehicles with partial trim

FRONT SEAT

REMOVAL AND INSTALLATION

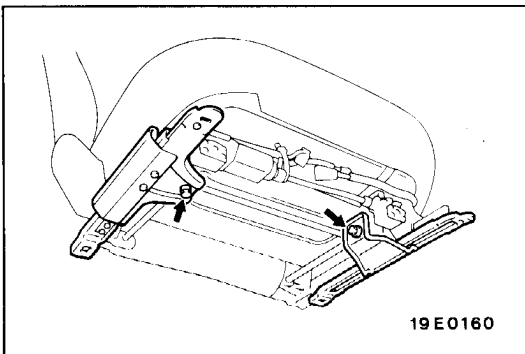
E52KA-A



- 1. Headrest
- 2. Seat under tray
<passenger's side only>
- 3. Heated seat switch

Front seat assembly removal steps

- ◆◆ 4. Seat anchor covers
- 5. Heated seat harness connector
- ◆◆ 6. Front seat assembly

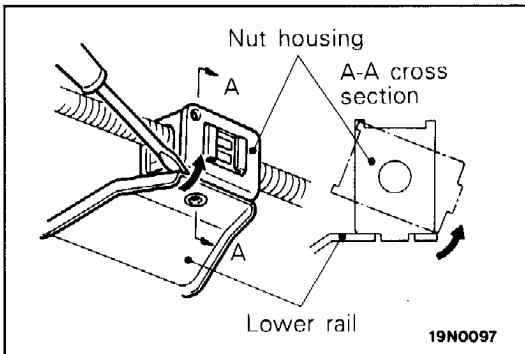


REMOVAL AND INSTALLATION POINTS OF FRONT SEAT ASSEMBLY WHEN THERE IS A MALFUNCTION IN THE POWER SEAT SLIDE MECHANISM

E52AK01AA

If removal of the seat mounting bolt is impossible when there is a malfunction in the slide motor or the slide switch and the seat cannot slide, remove and install the front seat assembly by the following procedure.

- (1) Remove the seat cushion assembly.
(Refer to P.52A-20-1.)
- (2) Remove the power seat relay box.
(Refer to P.52A-20-1.)
- (3) Remove the bolts below the seat cushion as shown in the illustration.
- (4) Insert a flat-tipped screwdriver in between the lower rail and the nut housing, and detach the nut housing from the lower rail hole and turn it.
- (5) Slide the seat, and remove the seat mounting bolts.

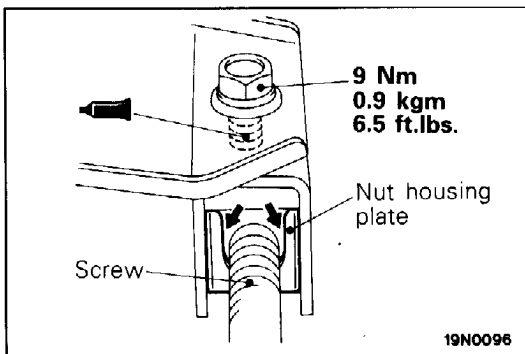


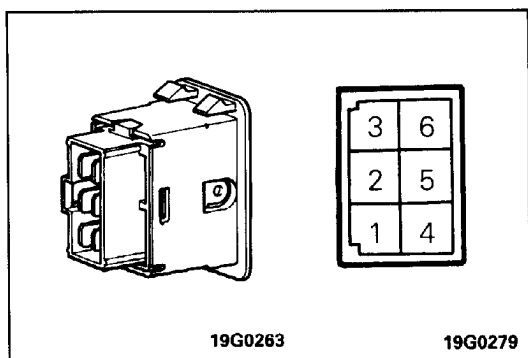
- (6) When reusing the power height adjuster assembly, apply specified adhesive to the mounting bolt, and tighten to the specified torque.

Specified adhesive: 3M Stud Locking Part No.4170 or equivalent

Caution

1. Match to the left and right nut housing positions.
2. Install so that the screw and nut housing plate do not cause interference.





INSPECTION

E52KCAC

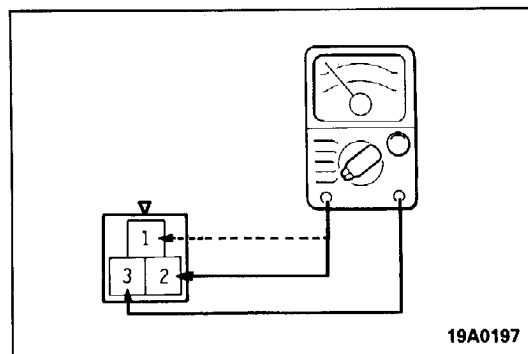
HEATED SEAT SWITCH

Operate the switch to check continuity between terminals.

Terminal No.	5	2	1	6	3	4
Switch position						
HI		○—○	○—○			
LO		○—○	○—○			
OFF		○—○	○—○			

NOTE

○—○ indicates there is continuity between the terminals.

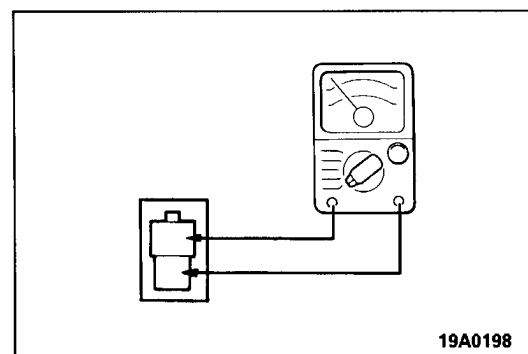


SEAT CUSHION HEATER

Measure the resistance between terminals.

Standard value [When passenger compartment temperature is 20°C (68°F)]:

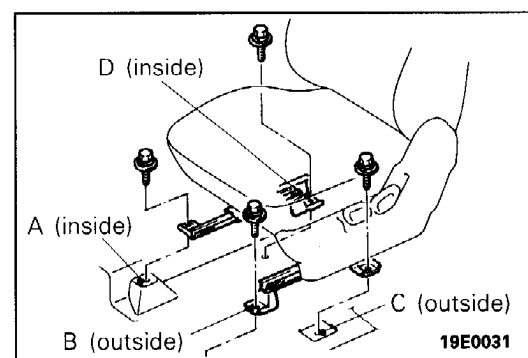
- Between terminals 1 and 3** **Approx. 7.1 Ω**
- Between terminals 2 and 3** **Approx. 7.4 Ω**
- Between terminals 1 and 2** **Approx. 0.4 Ω**



SEATBACK HEATER

Measure the resistance between terminals.

Standard value [When passenger compartment temperature is 20°C (68°F)]: **Between terminals** **Approx. 5.8 Ω**



SERVICE POINTS OF INSTALLATION

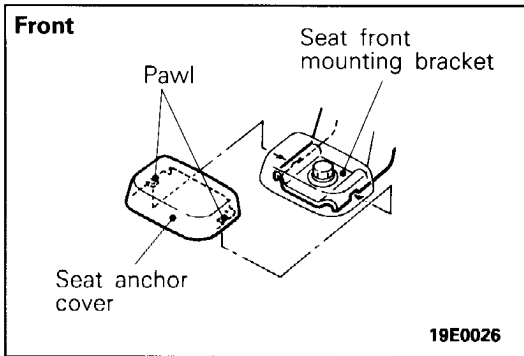
E52KDAN

6. INSTALLATION OF FRONT SEAT ASSEMBLY

- (1) Install the lower rail so that it matches the left and right front seat mounting hole positions, and lock both sides of the seat adjuster.
- (2) Provisionally tighten the seat mounting bolts in the order A, B, C, and D, and then tighten them to the specified torque.
- (3) After installing the front seat assembly, check that the seat moves backward and forwards smoothly, and that the seat adjuster locks on both sides in all lock positions.

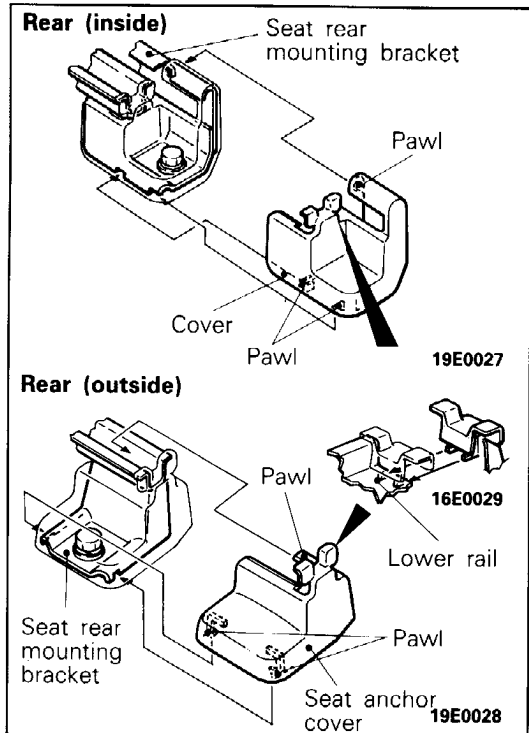
NOTE

The illustration shows the LH side seat.



4. INSTALLATION OF SEAT ANCHOR COVER

- (1) Press down the front seat anchor cover from the top of the seat front mounting bracket, and hang the anchor cover tab on the bracket.



- (2) Insert the rear seat anchor cover from the rear of the seat rear mounting bracket, and hang the anchor cover tab on the bracket while inserting into the lower rail.

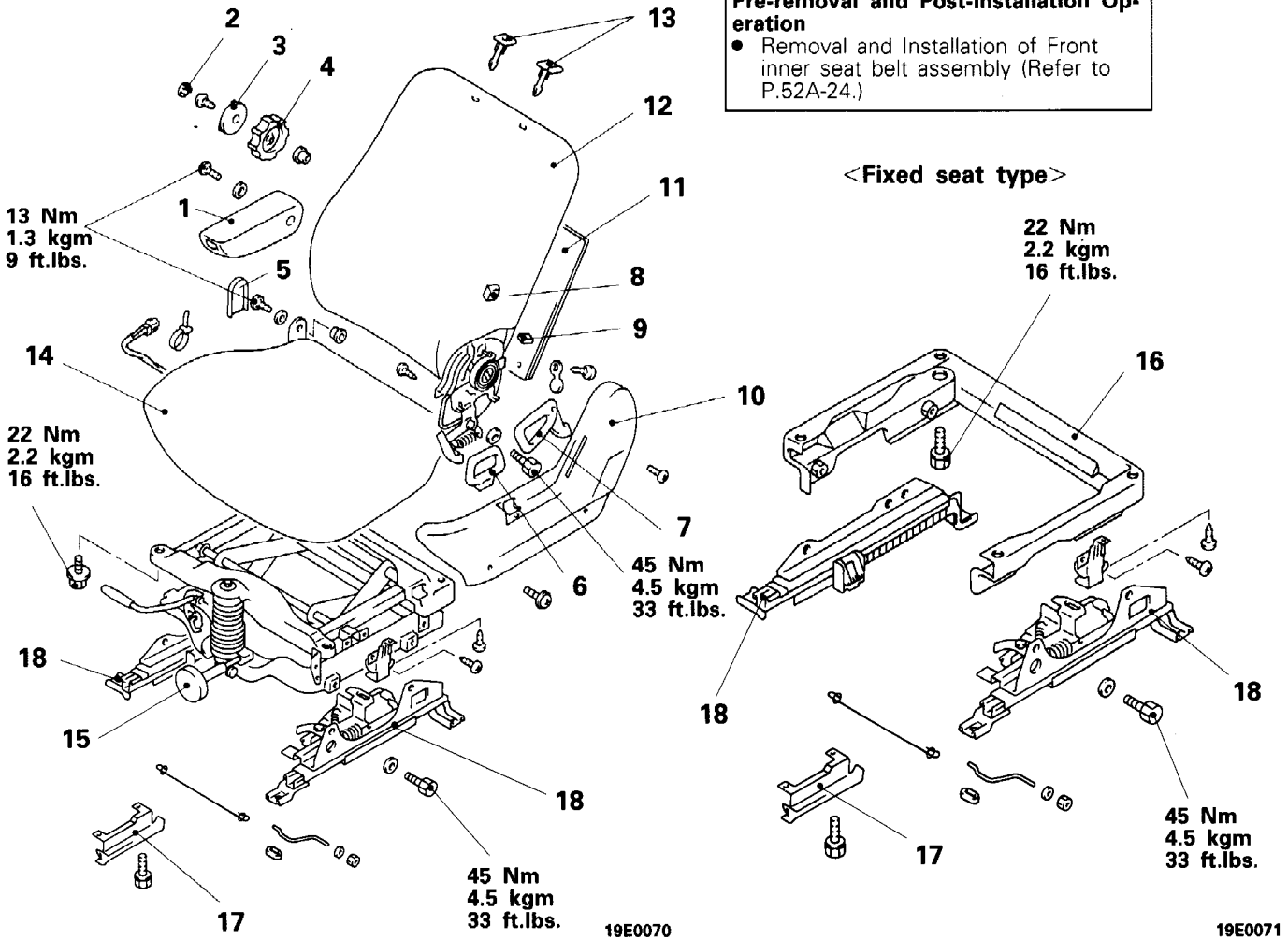
NOTES

DISASSEMBLY AND REASSEMBLY <MANUAL SEAT>

E52KE-A

Pre-removal and Post-installation Operation
 • Removal and Installation of Front inner seat belt assembly (Refer to P.52A-24.)

<Fixed seat type>



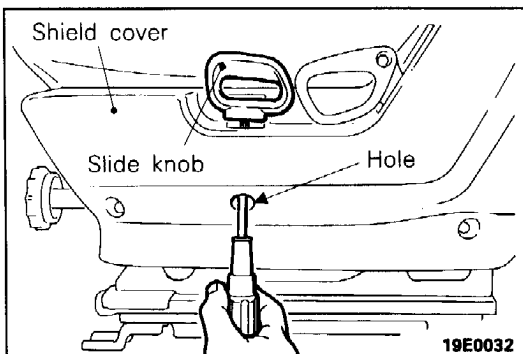
19E0070

19E0071

Disassembly steps

1. Armrest assmby
2. Side support lever cap
3. Side support lever
4. Lumbar support lever
5. Free hinge protector
6. Slide knob
7. Reclining knob
8. Reclining memory knob

9. Walk-in knob
10. Shield cover
11. Back pocket assembly
12. Seatback assembly
13. Headrest guide
14. Seat cushion assembly
15. Suspension assembly
16. Leg assembly
17. Under tray bracket
18. Seat adjuster



SERVICE POINT OF DISASSEMBLY

E52KFDB

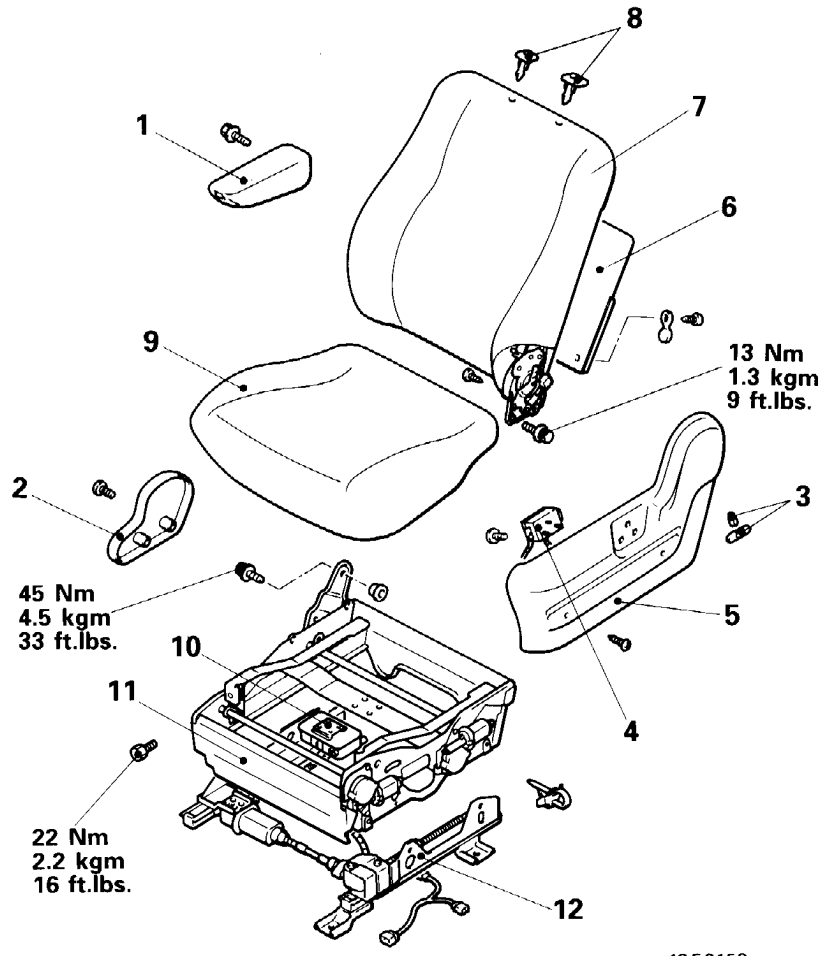
6. REMOVAL OF SLIDE KNOB

Pass a screwdriver through the shield cover hole and remove the slide knob mounting screw.

DISASSEMBLY AND REASSEMBLY <POWER SEAT>

Pre-removal and Post-installation Operation

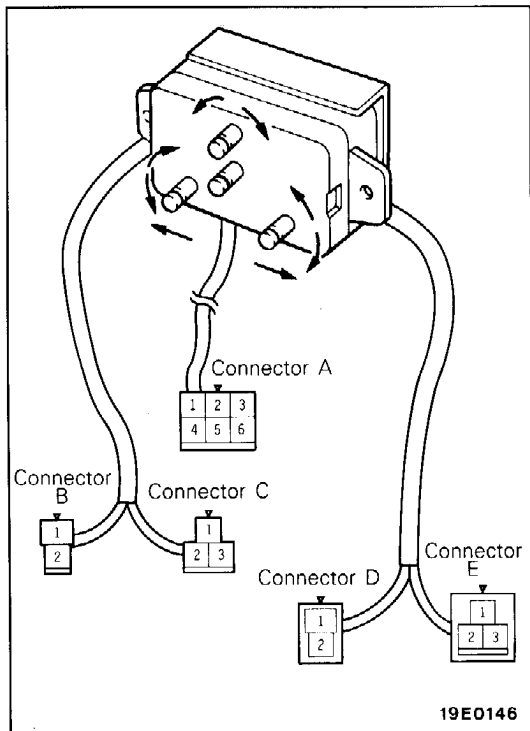
- Removal and Installation of Front inner seat belt assembly (Refer to P.52A-24.)



Disassembly steps

1. Armrest assembly
2. Free hinge protector
3. Power seat lever
4. Power seat switch
5. Shield cover
6. Back pocket assembly
7. Seatback assembly
8. Headrestraint guide
9. Seat cushion assembly
10. Power seat relay box
11. Leg assembly
12. Power seat adjuster

19E0159



19E0146

INSPECTION

POWER SEAT SWITCH

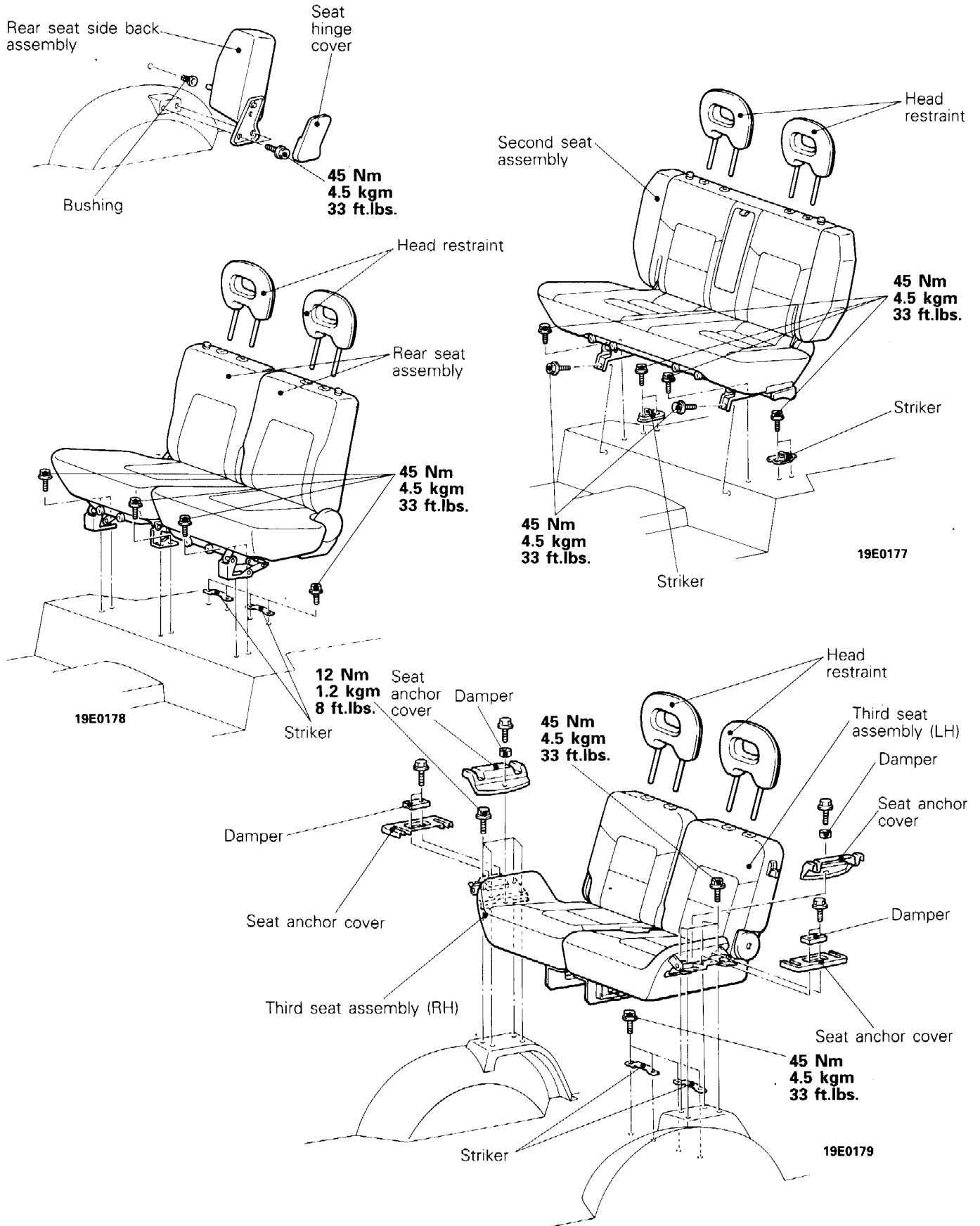
Operate the power seat switch and check for continuity.

Switch position		Connector	A						B		C			D		E		
		Terminal No.	1	2	3	4	5	6	1	2	1	2	3	1	2	1	2	3
Reclining switch	Forward		○		○													
	Backward		○															
Slide switch	Forward		○	○														
	Backward		○															
Height switch (Front)	Up		○						○				○					
	Down		○							○				○				
Height switch (Rear)	Up		○												○			○
	Down		○													○		○
All switches	OFF			○	○	○	○	○	○			○	○	○			○	

NOTE
 ○—○ indicates that there is continuity between the terminals.

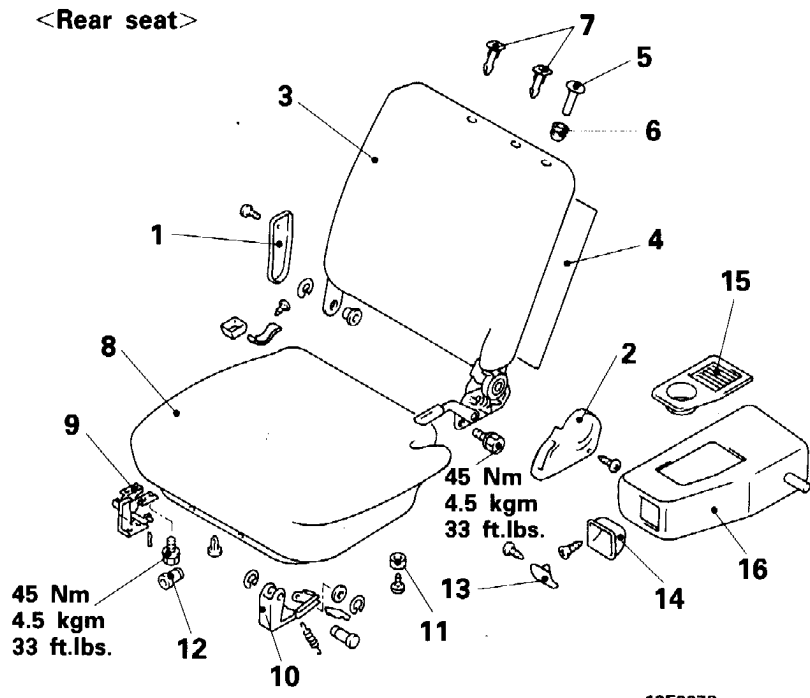
**REAR SEATS
REMOVAL AND INSTALLATION**

E62KA-B



DISASSEMBLY AND REASSEMBLY

E52KE-B



Rear seat disassembly steps

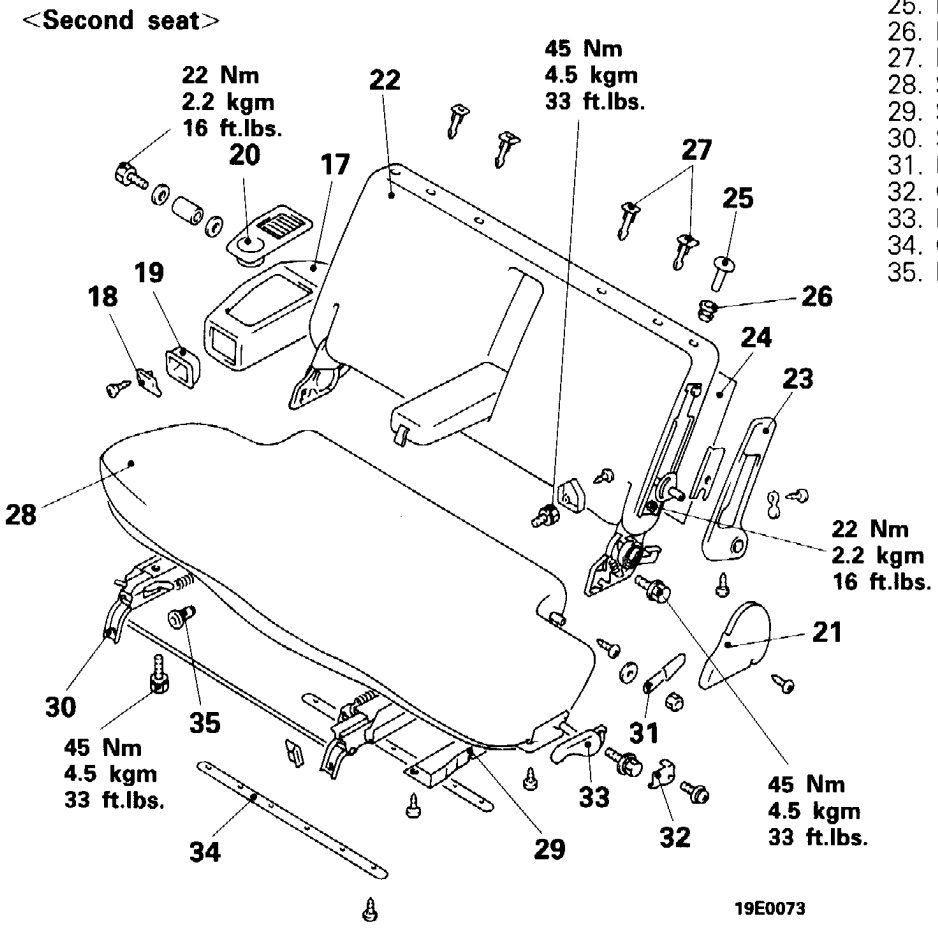
1. Free hinge cover
2. Reclining cover
3. Seat back assembly
4. Seat back trim
5. Knob
6. Knob guide
7. Head restraint guide
8. Seat cushion assembly
9. Centre leg assembly
10. Leg and link assembly
11. Bumper
12. Head restraint guide

Rear seat back disassembly steps

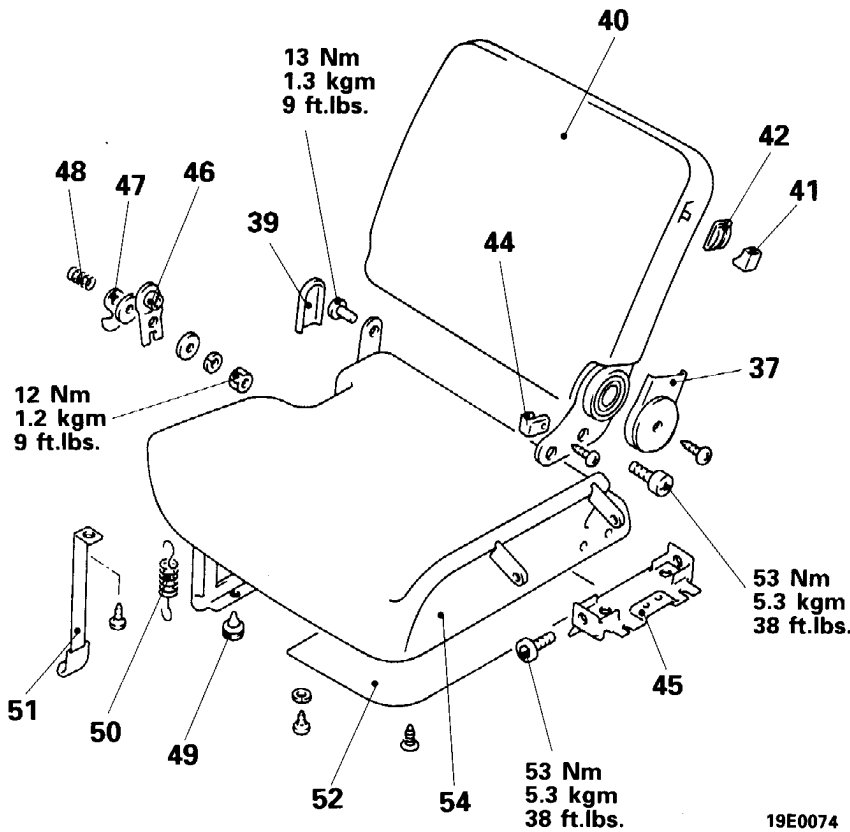
13. Seat back knob
14. Seat back garnish
15. Seat back tray
16. Rear seat side back

Disassembly steps

17. Side back assembly
18. Seat back knob
19. Seat back garnish
20. Seat back tray
21. Reclining cover
22. Seat back assembly
23. Rail cover
24. Seat back trim
25. Knob
26. Knob guide
27. Head restraint guide
28. Seat cushion assembly
29. Slide leg cover
30. Seat adjuster
31. Full flat knob
32. Cover
33. Knob
34. Cushion trim moulding
35. Head restraint guide



<Third seat – Vehicles built up to October, 1993>

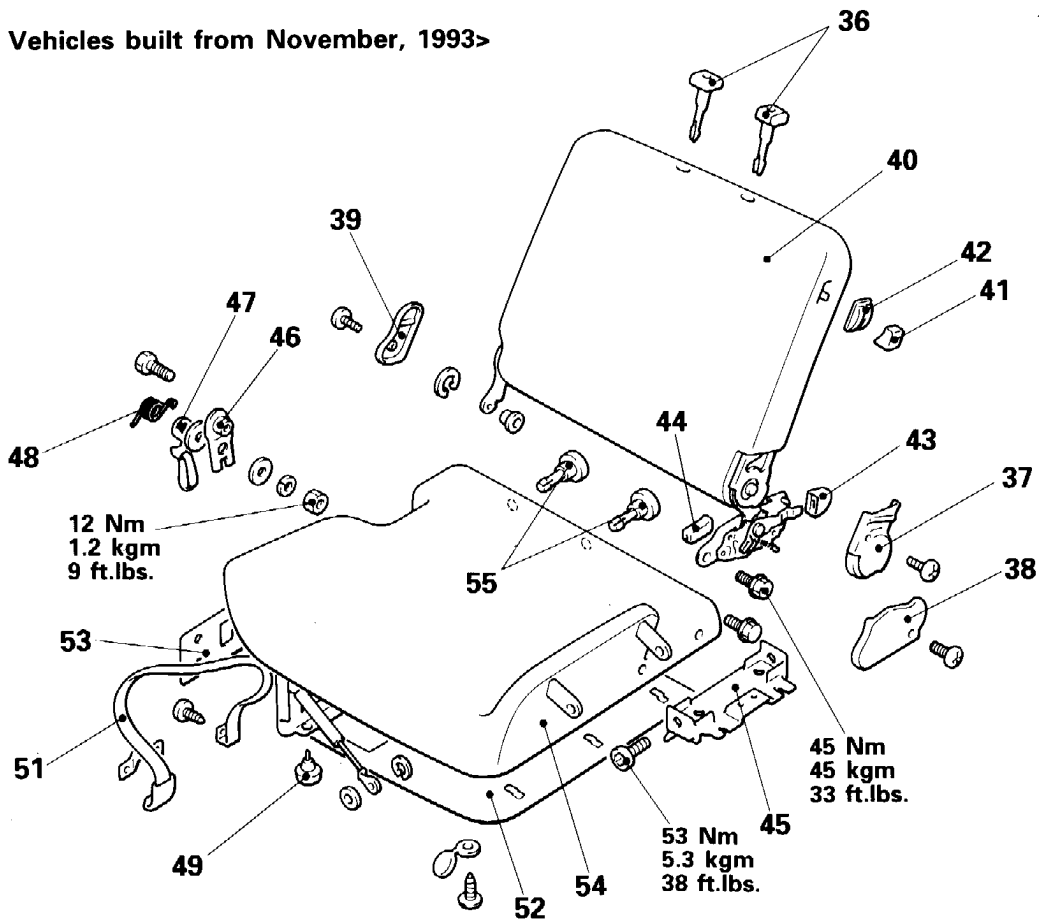


Disassembly steps

- 36. Head restraint guide
- 37. Reclining cover
- 38. Reclining cushion cover
- 39. Free hinge protector
- 40. Seat back assembly
- 41. Knob
- 42. Garnish
- 43. Full flat knob
- 44. Seat belt protector
- 45. Attaching bracket
- 46. Lock plate
- 47. Catch assembly
- 48. Torsion spring
- 49. Bumper
- 50. Torsion spring
- 51. Strap assembly
- 52. Back trim
- 53. Cushion side trim
- 54. Seat cushion assembly
- 55. Head restraint guide

19E0074

<Third seat – Vehicles built from November, 1993>

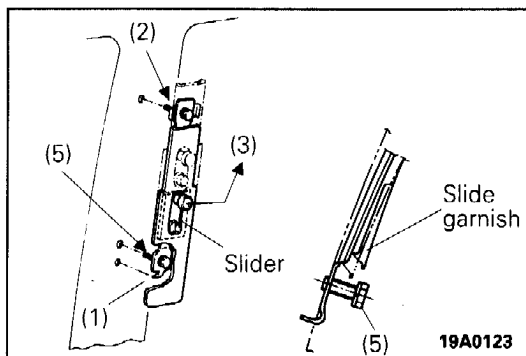
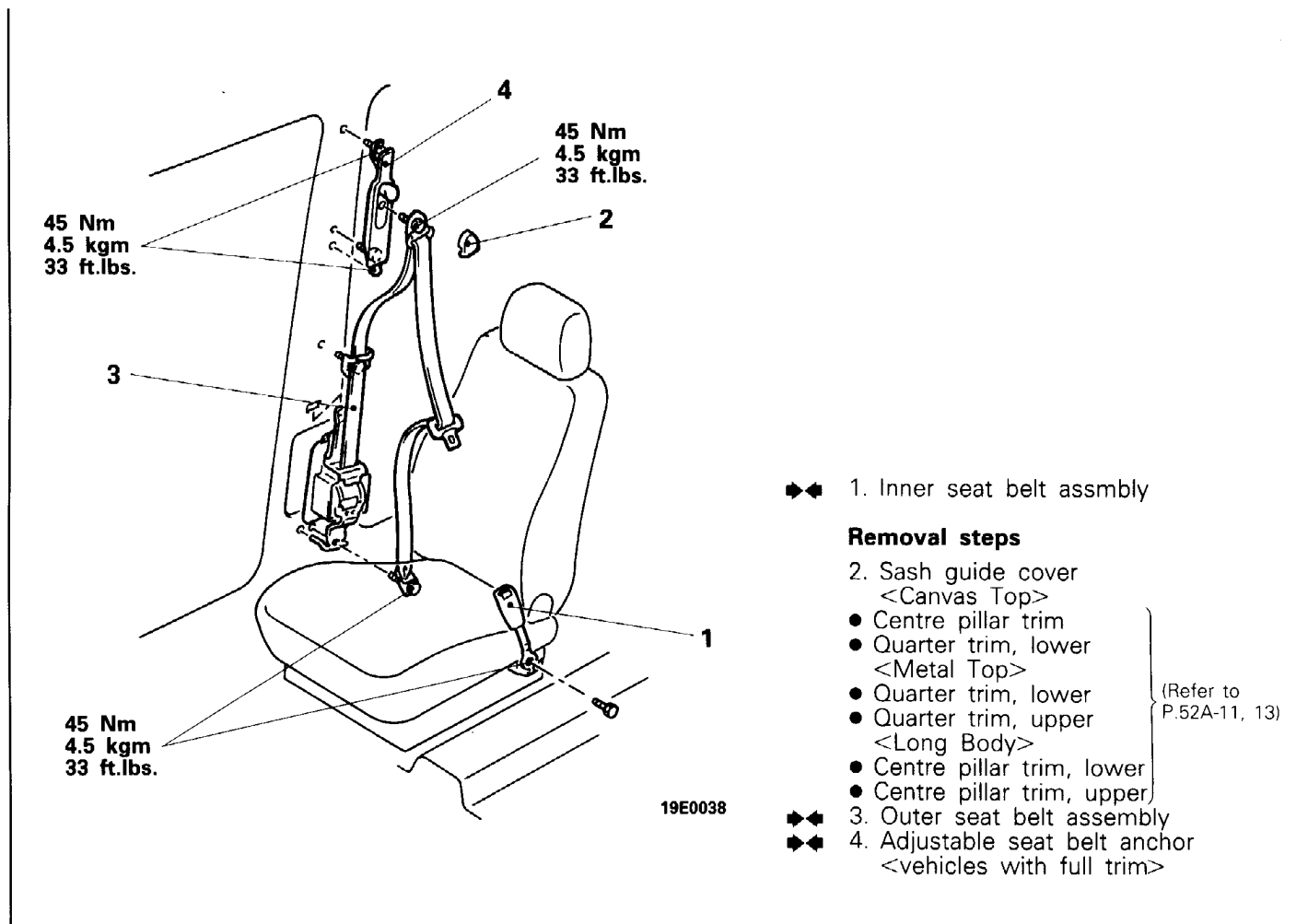


19E0161

FRONT SEAT BELT

REMOVAL AND INSTALLATION

E52MA-A

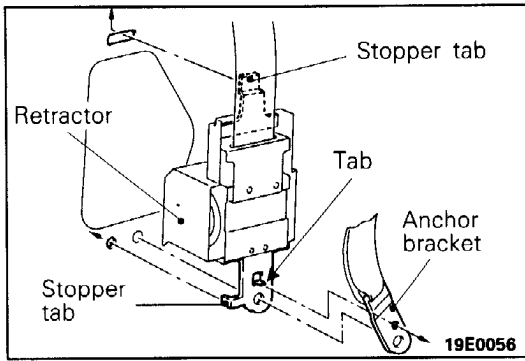


SERVICE POINTS OF INSTALLATION

E52MDAP

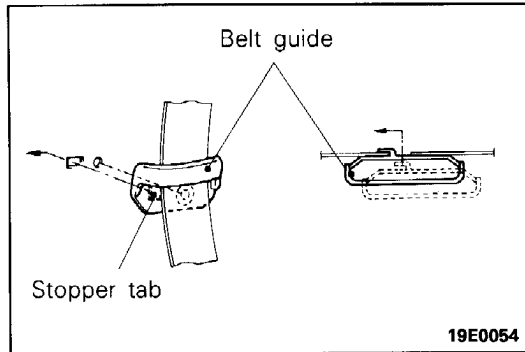
4. INSTALLATION OF ADJUSTABLE SEAT BELT ANCHOR

- (1) Securely fit the tab of the adjustable seat belt anchor into the hole in the centre pillar.
- (2) Provisionally tighten the installation bolt at the upper side.
- (3) Lock the slider at the uppermost position.
- (4) Raise the slide garnish to the upper side.
- (5) Tighten the lower side mounting bolt to the specified torque.
- (6) Lower the slide garnish and slider, and tighten the upper side mounting bolt to the specified torque.

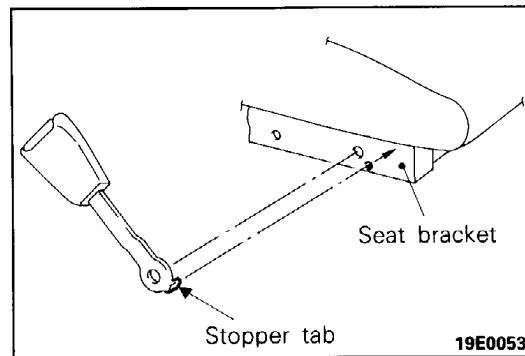


3. INSTALLATION OF OUTER SEAT BELT ASSEMBLY

- (1) Securely insert the retractor stopper tab into the body hole.
- (2) Securely insert the retractor bracket tab into the anchor bracket hole.



- (3) Securely insert the belt guide tab into the body hole.

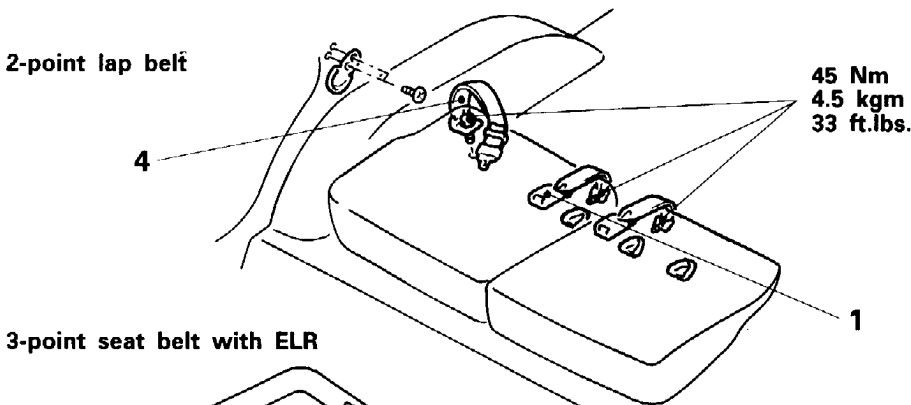


1. INSTALLATION OF INNER SEAT BELT ASSEMBLY

- Securely insert the stopper tab into the seat bracket hole.

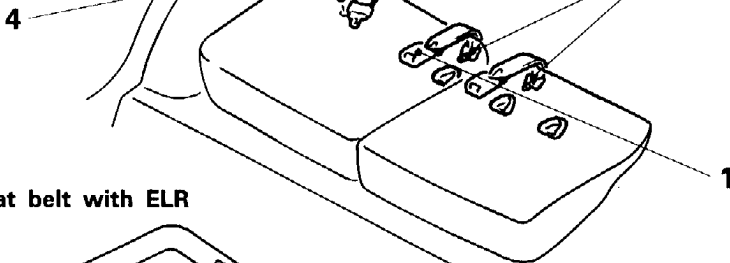
**REAR SEAT BELT
REMOVAL AND INSTALLATION**

<Rear seat belt - Canvas Top>



2-point lap belt

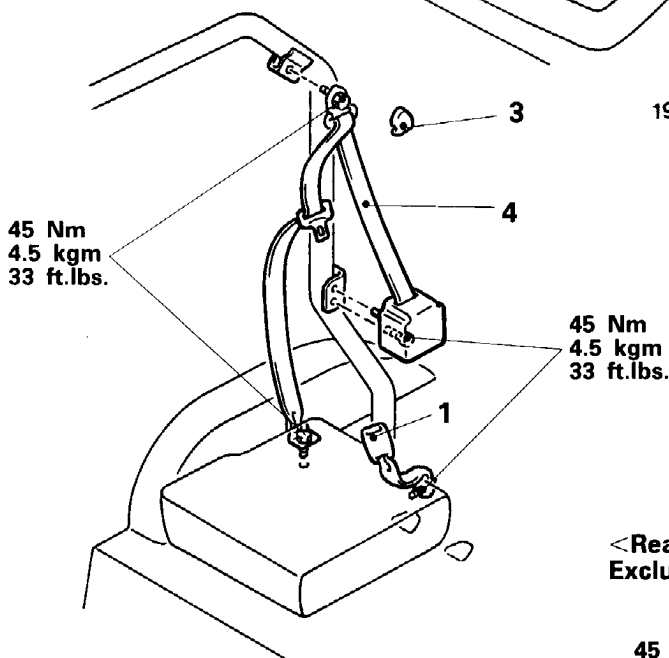
45 Nm
4.5 kgm
33 ft.lbs.



3-point seat belt with ELR

19E0060

- 1. Inner seat belt assembly
- 4. Outer seat belt assembly



45 Nm
4.5 kgm
33 ft.lbs.

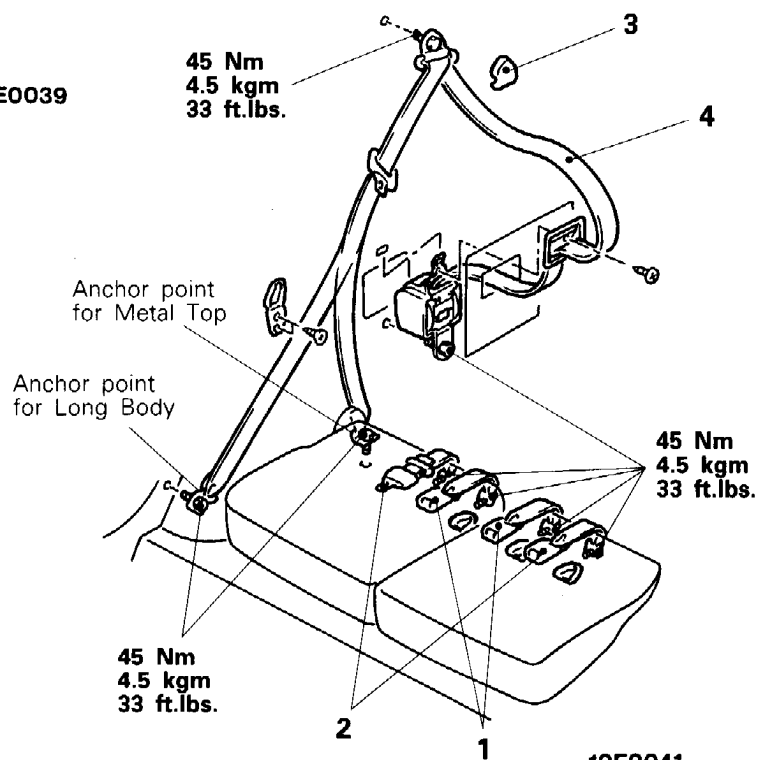
45 Nm
4.5 kgm
33 ft.lbs.

- 1. Inner seat belt assembly

**Outer seat belt assembly
removal steps**

- 3. Sash guide cover
- 4. Outer seat belt assembly

<Rear or second seat belt -
Excluding Canvas Top>



45 Nm
4.5 kgm
33 ft.lbs.

45 Nm
4.5 kgm
33 ft.lbs.

45 Nm
4.5 kgm
33 ft.lbs.

19E0041

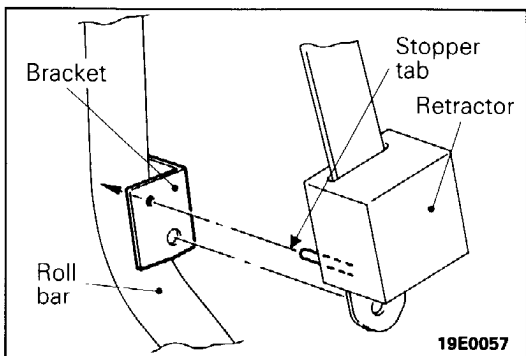
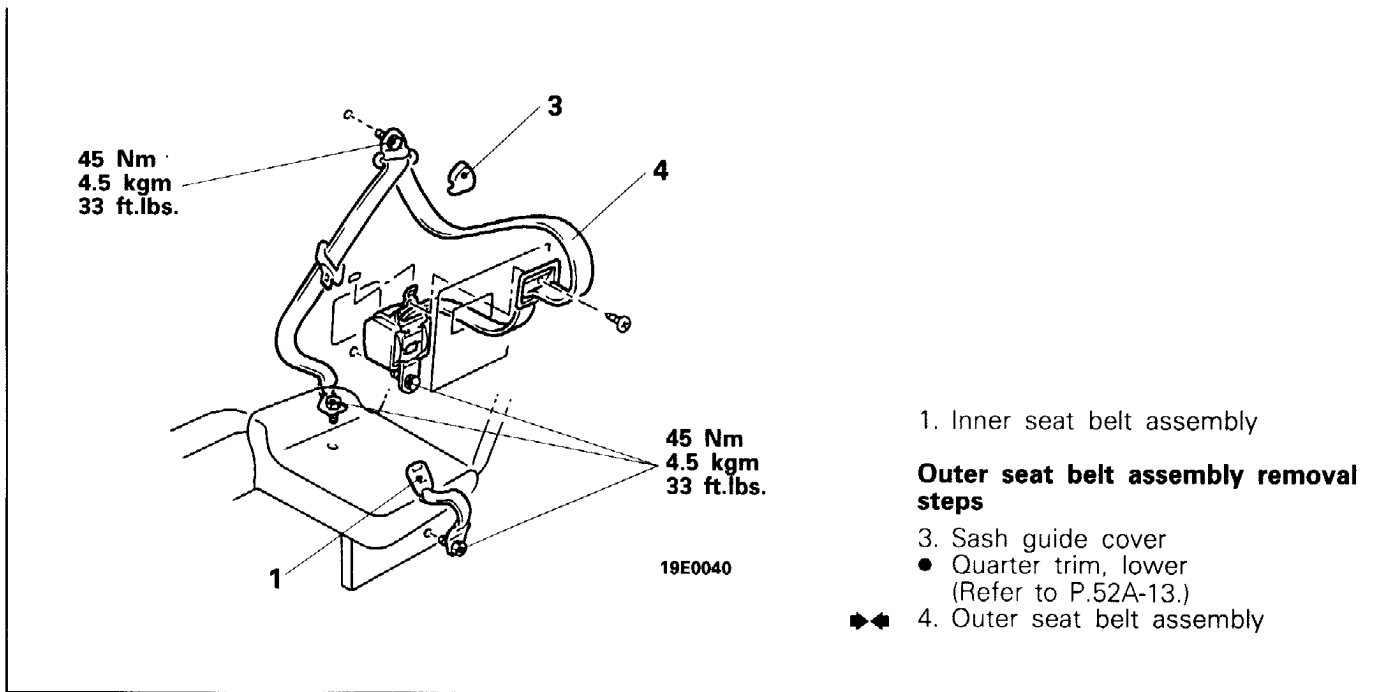
- 1. Inner seat belt assembly
- 2. Centre seat belt assembly

**Outer seat belt assembly
removal steps**

- 3. Sash guide cover <Excluding Metal Top>
- Quarter trim, lower (Refer to P.52A-11, 13.)

- 4. Outer seat belt assembly

<Third seat belt>

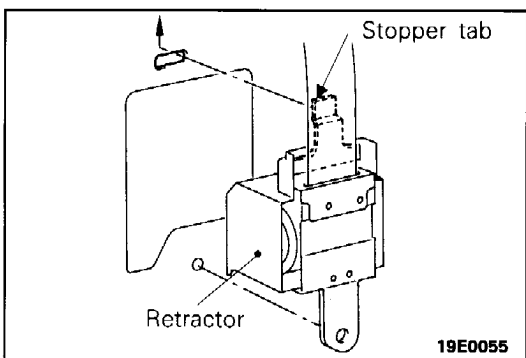


SERVICE POINTS OF INSTALLATION

E52MDBQ

4. INSTALLATION OF OUTER SEAT BELT ASSEMBLY

<3-POINT TYPE BELT WITH ELR – CANVAS TOP>
Securely insert the retractor stopper pin into the bracket hole in the roll bar.



<3-POINT TYPE BELT WITH ELR – METAL TOP AND LONG BODY>
Securely insert the retractor stopper tab into the body hole.